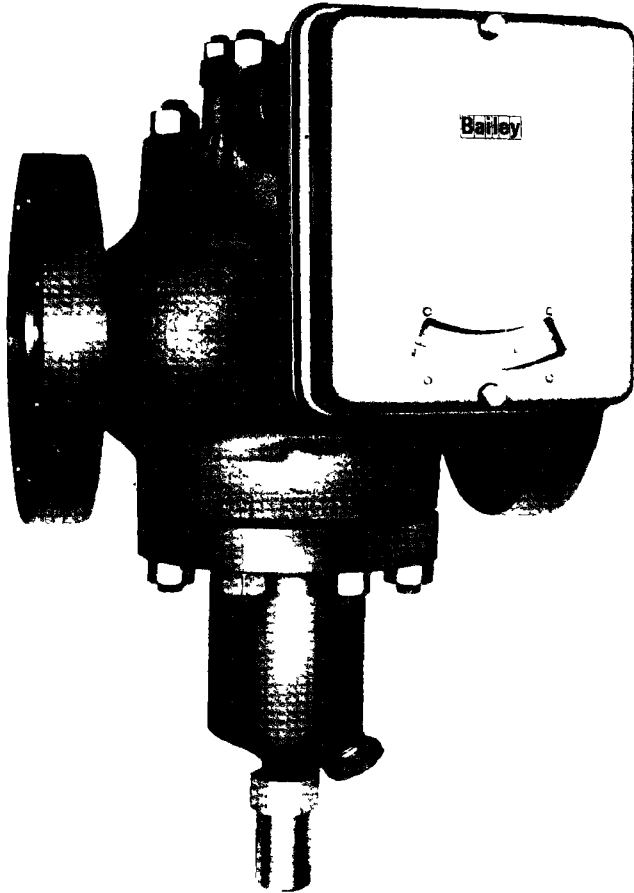
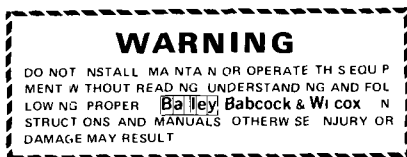


Product Instruction P22-7



**Area Meter
Type JR**

Bailey Babcock & Wilcox



LIST OF ILLUSTRATIONS

<u>Figure</u>	<u>Title</u>	<u>Page</u>
1	Mounting Dimensions, 1 inch Area Meter, 750 psi (Type JR132□A)	4
2	Mounting Dimensions, 1 inch Area Meter, 600 psi (Type JR134□A)	4
3	Mounting Dimensions, 2 inch Area Meter, 750 psi (Type JR132□A)	5
4	Mounting Dimensions, 2 inch Area Meter, 600 psi (Type JR134□A)	5
5	Mounting Dimensions, 4 inch Area Meter, 750 psi (Type JR1322A)	6
6	Mounting Dimensions, 4 inch Area Meter, 600 psi (Type JR1342A)	6
7	Routine Maintenance Check Points	8
8	Vane Nozzle Relationship	9
9	Spring Puller	20
10	Calibrating Micrometer	20
11	Indicating and Transmitting Mechanism Adjustments	21
12	Spindle and Flow Pointer Linkage at 50% Scale	22
13	Indicating Pointer Adjustments	23
14	Type JR13 Area Meter	26
15	Schematic of Booster Unit Operation	27
16	Booster Unit Inlet Exhaust Valve	27
17	Temperature Variations for Petroleum Oils	29
18	Specific Gravity Correction Factors	30
19	Flow Viscosity Correction Factor for 1 inch, Style F□70, JR13 Area Meter	30
20	Flow Viscosity Correction Factor for 1 inch, Style F□71, JR13 Area Meter	31
21	Flow Viscosity Correction Factor for 1 inch, Style F□22, JR13 Area Meter	31
22	Flow Viscosity Correction Factor for 1 inch, Style F□42, JR13 Area Meter	32
23	Flow Viscosity Correction Factor for 2 inch, Style F□44, JR13 Area Meter	32
24	Parts Drawing P22-40, Indicating and Transmitting Mechanism for Style FS87 JR13 Area Meter	34
25	Parts Drawing P22-41, 1 inch JR13 Area Meter (750 and 600 psi)	36
26	Parts Drawing P22-42, 2 inch JR13 Area Meter (250 and 600 psi)	37
27	Parts Drawing P22-44, 4 inch JR13 Area Meter (600 psi)	38
28	Parts Drawing P22-43, 4 inch JR13 Area Meter (250 psi)	39
29	Parts Drawing P22-37, Booster Unit Part No. 5316500-□	40

INDEX

	<u>Page</u>
INSTALLING THE AREA METER	7
ROUTINE SERVICING	7
<i>Measuring Mechanism</i>	7
Indicating and Transmitting Mechanism	7
Weekly	7
Monthly	8
Periodically	8
CORRECTIVE MAINTENANCE	8
Transmitter Operation Checks	8
Booster Unit Operation Checks	8
Vane Replacement	9
Nozzle Replacement	9
Bellows and Vane Mechanism Replacement	9
Booster Unit Replacement	10
Booster Unit Fault Correction Chart	10
Disassembly of Area Meter	11
Reassembly of Area Meter	12
Rotating Topwork Assembly	14
1 inch Area Meter Only	14
2 inch Area Meter Only	16
4 inch Area Meter Only	16
Repositioning of Dowel Pins	17
1 inch Area Meter Only	17
2 inch Area Meter Only	18
4 inch Area Meter Only	19
CALIBRATING THE AREA METER	19
Positioning Metering Plug	19
Disassembling Micrometer	20
Transmitter Adjustment Checks	21
Complete Calibration Procedure	21
Flow (Black) Pointer	21
Output Pressure	23
Output Pressure (Red) Pointer	24
Resetting Loading Spring	24
Booster Unit	25
HOW THE AREA METER OPERATES	25
Measuring Mechanism	25
Transmitting Mechanism	26
CORRECTION FACTORS	28
<i>Specific Gravity</i>	28
Oil Composition	28
Viscosity Correction	28
Recalibration	28
EXPLANATION OF NOMENCLATURE	33
REPLACEMENT PARTS	33

Type JR13 Area Meter

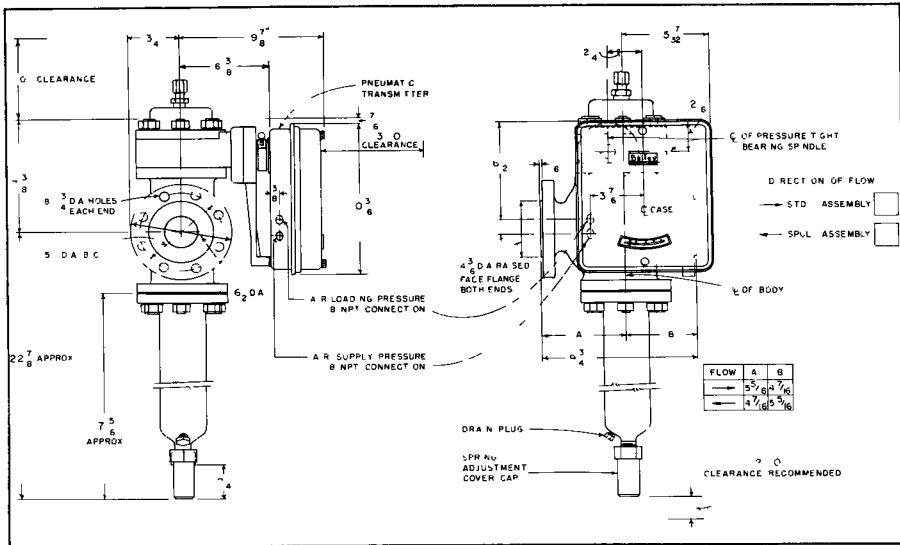


FIGURE 3 Mounting Dimensions, 2 inch Area Meter, 250 psi (Type JR13□□A)

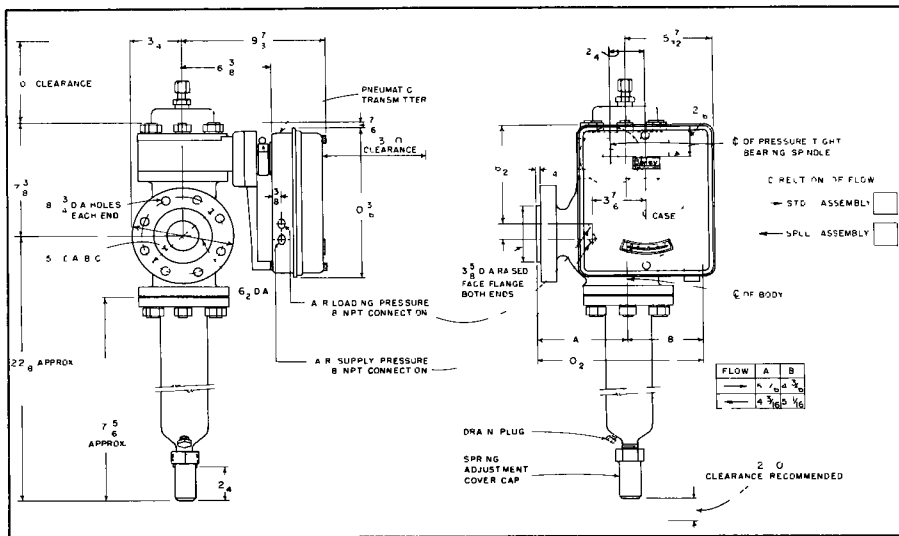


FIGURE 4 Mounting Dimensions, 2 inch Area Meter, 600 psi (Type JR134□□A)

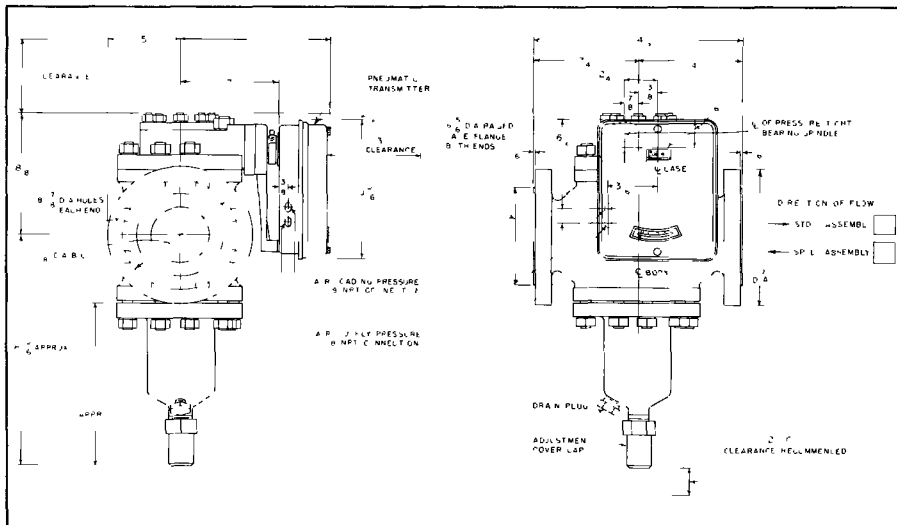


FIGURE 5 Mounting Dimensions, 4 inch Area Meter, 250 psi (Type JR132A)

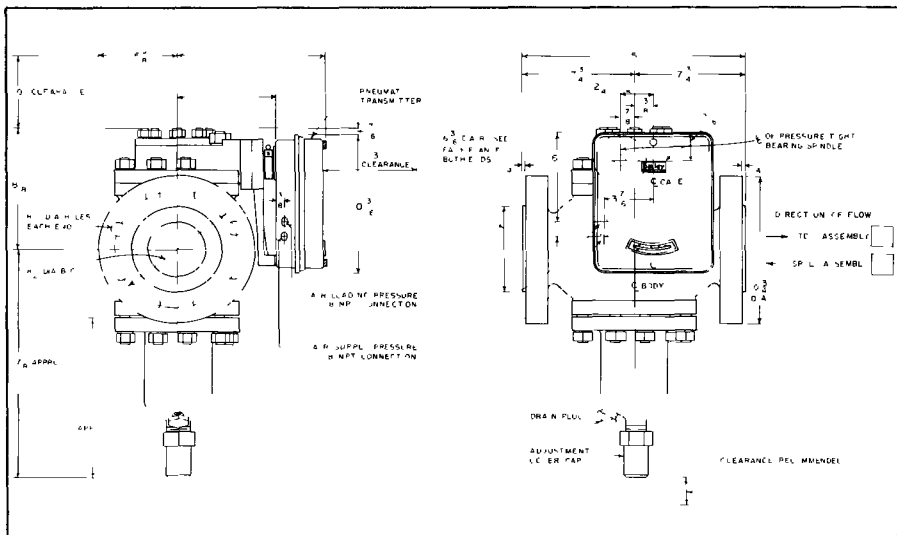


FIGURE 6 Mounting Dimensions, 4 inch Area Meter, 600 psi (Type JR1342A)

Type JR13 Area Meter

INSTALLING THE AREA METER

The Type JR13 Area Meter is shipped completely assembled (A spring puller to be used as a calibration tool is also shipped with each meter)

1 Install meter directly in pipe line between standard mating flanges Loading spring should hang vertically Meter body flanges are 150 or 600 psig ANSI standard raised face design Refer to Figures 1 thru 6 for applicable mounting dimensions

2 Transmitter is mounted on meter with indicating scale facing outward when direction of flow is left to right If it is necessary, due to inaccessibility or lack of clearance, to reverse Transmitter, topwork assembly of Area Meter can be rotated 180 degrees on meter body Refer to "Rotating Topwork Assembly"

3 A dampener is included with all 1 inch and 2 inch Area Meters The dampener reduces meter pulsation occurring primarily in marine applications If dampener is not required for the specific meter application, remove rod as follows

a Remove cover screws (or locknuts from studs) and cover

b Hold metering plug stem locknut (Figure 10) with wrench to prevent stem from moving (Movement of stem will disturb factory calibration)

c Unscrew dampener rod from threaded extension of metering plug stem Discard dampener rod

d Replace cover

4 Refer to Instruction Section G18 2 for recommended methods and precautions for installing connecting tubing

5 Inspect indicating and transmitting mechanism connecting linkage for damage Remove slapping screw (identified by red warning tag) in lower right hand corner of Transmitter case

6 If meter is used for measurement of highly viscous fluids, such as pitch

a Heat and insulate entire meter body, including spring housing Steam tracing, electrical strip heaters, or a heating cable is recommended for heating Fiber glass or a similar material is recommended for insulating Keeping meter body temperature at flowing fluid temperature prevents less active fluid in meter from solidifying in spring chamber making meter inaccurate and/or inoperative

b If necessary, replace drain at bottom of spring housing with a nipple and valve assembly to facilitate blowdown procedures

c Install a bypass line around meter to facilitate checking meter operation particularly if flow thru the meter is constant over an extended period

7 Check Transmitter calibration as outlined under "Transmitter Adjustment Checks"

ROUTINE SERVICING**MEASURING MECHANISM**

1 Every three or four months, remove drain plug from bottom of spring housing and thoroughly flush meter body Flush meter body more frequently if measured fluid tends to congeal

INDICATING AND TRANSMITTING MECHANISM**Weekly**

1 Press Booster Unit orifice clean out plunger (Figure 7) to insure that orifice remains open and clean

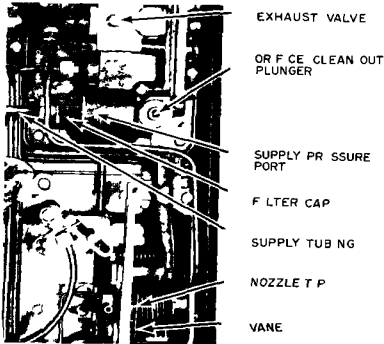


FIGURE 7 Routine Maintenance Check Points

NOTE Perform this operation only when associated equipment in the system has been transferred to MANUAL operation to ensure that the process will not be disturbed.

2 Inspect nozzle tip and vane (Figure 7) for deposits of oil or dirt. If necessary, clean with a common solvent.

CORRECTIVE MAINTENANCE

If system operation indicates a discrepancy in pressure measurement which is suspected or traced to the Transmitter, check the following possible sources of error:

TRANSMITTER OPERATION CHECKS

1 Transmitter must be in perfect calibration (see "Calibrating the Area Meter").

2 Air supply must be accurate and from a clean, regulated source. (Presence of oil around vane nozzle indicates contaminated supply source.)

3 The vane nozzle and Booster Relay must be free of dirt or dust.

4 Connecting piping to Transmitter must be clean and free of corrosion. Sluggish operation may indicate corrosive build up in piping.

Monthly

1 Inspect Booster Unit exhaust valve (Figure 7) for accumulations of oil, dirt, and/or moisture. If necessary, replace filter in supply pressure port as follows:

a Disconnect supply air tubing (Figure 7) and remove filter cap, O Ring, and filter spring (Items 6, 7 and 8, Figure 29).

b Remove and replace filter assembly. Make certain new filter is installed with open end facing inward.

c Reassemble parts and reconnect tubing.

CAUTION Filter in supply pressure port is included as added protection only and is not intended as a replacement for the required clean air supply.

Periodically

1 Check air supply. Make certain that clean air, free of oil, dirt, and moisture, is supplied to the Booster Unit.

2 Clean Transmitter. Deposits of oil and dirt make instrument operation sluggish or inaccurate.

3 A connecting tubing must be air tight. Check all tubing for leakage with a leak detecting solution.

4 Check operation of Booster Unit (see "Booster Unit Operation Checks", below).

5 Faulty records or measurements are often caused by the process itself. Examine indications, records, and system component operation carefully to locate faulty component equipment.

BOOSTER UNIT OPERATION CHECKS

1 Push vane against nozzle to block air flow from nozzle (Figure 8). Transmitter output pressure should immediately start to increase to full supply pressure.

2 Pull vane away from nozzle far enough to allow an unrestricted air flow from the nozzle.

Type JR13 Area Meter

Transmitter output pressure should immediately start to decrease to zero

3 If Booster unit does not operate as described in steps 1 and 2, push orifice clean out plunger (Figure 7) to clear orifice (when performing this operation, make certain process will not be disturbed) If Booster continues to operate incorrectly, make the following checks and corrective adjustments

a Check that adjustable vane end is correctly positioned (Figure 8) When vane end is correctly positioned, nozzle tip is opposite center of vane (thinnest area) when midrange measured pressure is applied to Transmitter To adjust vane end position, apply midrange measured pressure to Transmitter, loosen nut holding vane end in place, and reposition vane end

b Check that vane is parallel to plane of nozzle tip (Figure 8) With Booster unit "at balance", press lightly against vane with pointed instrument at four or more points around nozzle tip (above, below, on either side) If pressure at any of these points produces the relationship shown in Figure 8, Sketch B, either vane is not parallel to plane of nozzle tip or there is a burr on nozzle tip To adjust, bend vane slightly If vane and nozzle tip relationship is still incorrect, rub a fine emery cloth across nozzle tip to remove possible burr

c Repeat steps 1 and 2 under "Booster Unit Operation Checks" above and note output pressure reading If Booster unit output is in correct see "Fault Correction Chart"

VANE REPLACEMENT (Figure 24)

- 1 Remove instrument from service and remove cover
- 2 Remove screws (47) holding vane and operating lever assembly (60) Remove assembly and disconnect vane (front) drive link (23)
- 3 Replace vane and operating lever assembly
- 4 Reconnect vane drive link and reposition vane and operating lever assembly

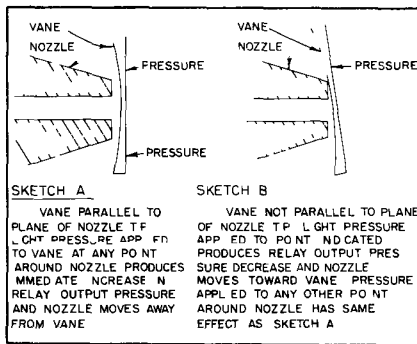


FIGURE 8 Vane Nozzle Relationship

NOZZLE REPLACEMENT (Figure 24)

- 1 Remove instrument from service and remove cover
- 2 Loosen nozzle screw (44) and screw (39) holding capillary clip (40) Disconnect nozzle air line (64) at Booster Unit connection (65)
- 3 With pliers, carefully withdraw nozzle air line (64) from nozzle clamp block (61)
- 4 Replace nozzle air line (64) assembly and reassemble

NOTE When replacing nozzle, readjust the vane and nozzle relationship as described under "Booster Unit Operation Checks"

BELLOWS AND VANE MECHANISM REPLACEMENT (Figure 24)

- 1 Remove instrument from service and remove cover
- 2 Loosen screw (44) and carefully remove nozzle from nozzle clamp block (61)
- 3 Remove three screws (41) holding bellows and vane mechanism Remove air line from bellows at tee (38)
- 4 Pull assembly forward and disconnect vane and nozzle air drive link (23) from vane and nozzle adjustable arms (24)

5 To replace bellows only, remove three screws (53), elastic stop nut (43), hex nut (54) and lockwasher (55). Remove hex nut (49) and lockwasher (50).

a Remove two screws (47) holding bellows beam assembly to bellows beam hinge.

b Replace bellows.

6 To reassemble, perform steps 1 thru 5 in reverse order.

BOOSTER UNIT REPLACEMENT
(Figure 24)

1 Remove instrument from service and remove Transmitter cover.

2 Loosen hose clamp.

3 Disconnect loading arm at loading connector. Disconnect supply air line at supply connector.

4 Disconnect connecting link from adjustable arm (note position). Remove 6.3" screw securing drive arm, sector plate and adjustable arm and remove from spindle (Note position of items on spindle before removing.)

5 Remove locating screw.

6 Disconnect all tubing at Booster Relay.

7 Make certain 10.32 pan head screw (used for slipping purposes only) has been removed.

BOOSTER UNIT FAULT CORRECTION CHART

FAULT	PROBABLE CAUSE	CORRECTION
<p>Booster unit output is incorrect with an increase in measured pressure.</p>	<p>1 Supply air not passing thru filter (Item 5, Figure 29)</p> <p>2 Blocked supply passage (Figure 8) to diaphragm and rod assembly (Item 19, Figure 29)</p> <p>3. Exhaust valve (Figure 15) not properly seated.</p>	<p>1. Replace filter at supply port (see Routine Maintenance") and observe Transmitter operation.</p> <p>2 Remove cover (Item 17, Figure 29). Make certain cover gas ket (Item 16) is not blocking passage from supply port.</p> <p>3 Check visually. If necessary, replace exhaust valve or seat (Items 12 and 22, Figure 29). Make certain exhaust seat is aligned with inlet seat and that valve retaining pin (in valve retaining spring, Item 11) is centered in valve (Item 12).</p>
<p>Booster unit output is incorrect with a decrease in measured pressure.</p>	<p>1. Blocked line from Booster unit to nozzle (Figure 15).</p> <p>2 Inlet valve (Item 12, Figure 29) improperly seated.</p> <p>3 Leakage at either diaphragm pivot of diaphragm and rod assembly (Item 19, Figure 29)</p>	<p>1. Remove and clean nozzle air line (Figure 15).</p> <p>2 Remove exhaust seat and valve (Items 22 and 12, Figure 29). Inspect seat and valve for evidence of improper seating. If necessary, replace valve or diaphragm and rod assembly (Item 19).</p> <p>3 Remove diaphragm and rod assembly (Item 19, Figure 29) and inspect diaphragms. If necessary, replace diaphragm and rod assembly.</p>

Type JR13 Area Meter

8 Remove mechanism support bracket from Transmitter housing

9 Remove three 10-32 screws in back of mechanism support bracket securing Booster Relay

10 To reassemble perform steps 1 thru 9 in reverse order. After reassembly, refer to "Transmitter Adjustment Checks" to check position of drive arm, sector plate and adjustable arm

DISASSEMBLY OF AREA METER

If Type JR13 Area Meter must be disassembled for maintenance or repair follow procedure below and refer to Figures 25, 26, 27 or 28

1 Remove meter from service. Remove drain plug from housing assembly and allow fluid to drain from valve body

2 Remove Transmitter cover. Disengage connecting link from adjustable range arm (Figure 11)

3 Remove sealing cap from bottom of housing assembly

4 Screw spring puller rod (shipped with Meter) into bottom of adjusting screw and pin assembly. Pull rod and remove two 5/16 inch nuts and washer. Gradually release rod to prevent spring from snapping when tension is relieved. Do not disassemble spring puller rod

5 Remove hex head screws (700 psi) or hex nuts (600 psi) and separate housing assembly from valve body

6 Disconnect loading spring (including adjustment screw and pin assembly and threaded spring puller rod) from spring hanger and pin assembly

7 Remove hex head cap screws (or hex nuts from studs) securing cover. Remove cover

8 To remove housing and adapter plate assembly use procedure below applicable to specific Area Meter size

NOTE: It is not necessary to remove lockplate or disturb stop screw settings when removing housing and adapter plate assembly

a 1 inch Area Meter Remove two 1/4 20 fillister head screws securing housing and adapter plate assembly. While lifting housing and adapter plate, grasp metering plug stem and dampener rod and lift simultaneously. Lift both assemblies until stem moves back and forth a sufficient amount to permit pin of drive lever assembly to slip free of bearing plates. Remove assembly (including Transmitter) from adapter plate. Remove 3/8 16 socket head screws. Remove adapter plate from valve body

b 2 inch Area Meter Remove two 1/4 20 fillister head screws securing housing and adapter plate assembly to valve body. While lifting housing and adapter plate assembly, grasp metering plug stem and lift simultaneously. Lift both assemblies until stem moves back and forth a sufficient amount to permit pin of drive lever assembly to slip free of bearing plates. Remove housing and adapter plate assembly (including Transmitter) from valve body

c 4 inch Area Meter Remove 3/4 10 hex head screws (750 psi) or 3/4 10 hex nuts (600 psi) securing housing and adapter plate assembly to valve body (Note position of two extra long 3/4 10 screws when removing). While lifting housing and adapter plate assembly, grasp metering plug stem and lift simultaneously. Lift both assemblies until stem moves back and forth a sufficient amount to permit pin of drive lever assembly to slip free of bearing plates. Remove housing and adapter plate assembly (including Transmitter) from valve body

9 If pressure tight bearing spindle assembly or Transmitter must be removed from housing and adapter plate assembly, follow procedure outlined below

a Note position of sector plate on spindle assembly. Remove 6-32 screw to release adjustable range arm and sector plate from spindle assembly shaft

b Carefully remove pressure tight bearing cap and follower and washer assembly

c Remove pressure tight bearing body and O-ring (Replace O-ring when reassembling)

d Remove forked lever screw securing drive lever assembly to spindle assembly shaft

e Hold drive lever assembly in position. From front of Transmitter, carefully pull spindle assembly shaft to remove from housing

CAUTION Use care when removing shaft to avoid damage to spindle bearing surface

f To remove Transmitter, loosen hose clamp and remove three 5/16 inch cap screws (Replace O ring when reassembling)

g To replace O ring between adapter plate and spindle housing remove four 1/7 13 socket head screws

h Replace damaged parts. Lubricate O rings. Reassemble housing and adapter plate assembly Torque 1/2 13 screws to 35 ft lb. Install spindle assembly shaft and Transmitter Torque pressure tight bearing body to 30 ft lb

NOTE! When inserting spindle assembly shaft thru drive lever assembly, rotate shaft until tapped hole in shaft lines up with hole for forked lever screw

10 Remove following parts as a complete assembly. Lift out of valve body metering plug stem and dampener rod assembly (dampener rod used on 1 inch and 2 inch Meters only), upper bearing, lower bearing, spring, stop washer (used on 1 inch and 2 inch Meters only), metering plug and spring hanger and pin assembly

1 Do not disassemble items removed in step 10 unless replacement of parts is necessary. If disassembly is necessary, remove dampener rod (used on 1 inch and 2 inch Meters only) and locknut (Pt No 1972143). Replace damaged parts and reassemble. The locknut determines position of upper and lower bearing on metering plug stem. Reset locknut as follows:

a Install locknut on metering plug stem

b Turn locknut until there is 2/16 inch between start of threads on stem and top of locknut (For 4 inch, 600 psi, 3/4 inch stroke Meters only the distance should be set at 3/16 inch)

c For 1 inch and 2 inch Meters only Assemble dampener rod on threaded extension of metering plug stem. Use extreme care when tightening dampener rod. Overtightening may shear or deform threads causing loss of concentricity between stem and dampener rod. Parts have been inspected for concentricity and are used as a matched set.

17 If valve cage must be replaced, use slot in bottom of cage and unscrew from valve body

REASSEMBLY OF AREA METER

Refer to Table of Torque Values for parts requiring a specific torque value when reassembling

1 If valve cage was removed screw cage into valve body Tighten to specified torque value

2 Lower valve stem and dampener rod assembly (dampener rod used on 1 inch and 2 inch meters only), upper bearing, lower bearing spring, stop washer, metering plug and spring hanger and pin assembly into valve body

3 To reassemble housing and adapter plate assembly use procedure below applicable to Area Meter size

a 1 inch Area Meter Position adapter plate on valve body and secure with 3/8 16 socket head screws Torque screws to specified value. While lowering housing and adapter plate assembly (including Transmitter) into position, grasp metering plug stem and dampener rod assembly and lift until stem moves back and forth a sufficient amount to permit pin of drive lever assembly to slip into position between bearing plates. Lower both assemblies into position making certain holes in housing and adapter plate assembly are in alignment with dowel pins in adapter plate. Secure assembly with two 1/4 20 1118 steel head screws

b 2 inch Area Meter While lowering housing and adapter plate assembly (including Transmitter) into position, grasp metering plug stem and dampener rod assembly and lift until stem moves back and forth a sufficient amount to permit pin of drive lever assembly to slip into position between bearing plates. Lower both assemblies into position making certain holes in housing and adapter plate assembly are in alignment with dowel pins in valve body. Secure assembly with two 1/4 20 1118 steel head screws

c 4 inch Area Meter While lowering housing and adapter plate assembly (including Transmitter) into position, grasp metering plug stem and lift until stem moves back and forth a sufficient amount to permit pin of drive lever assembly to slip into position between bearing plates. Lower both assemblies into position,

Type JR13 Area Meter

TABLE OF TORQUE VALUES

NOTE When assembling instrument, apply appropriate torque value below to nuts on greased studs. Further tightening on any increases stud tensions without increasing compression of O-ring gaskets since there is metal to metal contact between the mating surfaces. For joints, disassemble and inspect O-ring for cuts or damage. Metal surface must be smooth and clean.

Meter Size	Part Name	Location	Service Pressure	
			250 psig	600 psig
1 Inch	P T B Body	P T B and Spindle Assembly	30 ft lb	30 ft lb
	7/16 14x3 1/4 Hex Hd Screw	Holding Cover to Adapter Plate	30 ft lb	30 ft lb
	3/8 16x1 Socket Hd Screw	Holding Adapter Plate to Valve Body	20 ft lb	20 ft lb
	Valve Cage	Inside Valve Body	12 ft lb	12 ft lb
	3/8 16x1 Hex Hd Screw	Holding Housing Assembly to Valve Body	20 ft lb	
	3/8 16 Hex Nut	Holding Housing Assembly to Valve Body		20 ft lb
	1/2 13x1 1/2 Soc Hd Screw	Holding Adapter Plate to Housing	35 ft lb	35 ft lb
2 Inch	P T B Body	P T B and Spindle Assembly	30 ft lb	30 ft lb
	7/16 14x3 1/4 Hex Hd Screw	Holding Cover to Valve Body	30 ft lb	
	7/16 14 Hex Nut	Holding Cover to Valve Body		30 ft lb
	Valve Cage	Inside Valve Body	35 ft lb	35 ft lb
	7/16 14x1 1/4 Hex Hd Screw	Holding Housing Assembly to Valve Body	30 ft lb	
	7/16 14 Hex Nut	Holding Housing Assembly to Valve Body		30 ft lb
	1/2 13x1 1/2 Soc Hd Screw	Holding Adapter Plate to Housing	35 ft lb	35 ft lb
4 Inch	P T B Body	P T B and Spindle Assembly	30 ft lb	30 ft lb
	1/2 13 Hex Nut	Holding Cover to Housing and Adapter Plate Assembly	50 ft lb	50 ft lb
	3/4 10x2 Hex Hd Screw	Holding Housing and Adapter Plate Assembly to Valve Body	160 ft lb	
	3/4 10 Hex Nut	Holding Housing and Adapter Plate Assembly to Valve Body		160 ft lb
	Valve Cage	Inside Valve Body	80 ft lb	80 ft lb
	3/4 10x1 3/4 Hex Hd Screw	Holding Housing Assembly to Valve Body	160 ft lb	
	3/4 10 Hex Nut	Holding Housing Assembly to Valve Body		160 ft lb
	1/2 13x1 1/2 Soc Hd Screw	Holding Adapter Plate to Housing	35 ft lb	35 ft lb

making certain holes in housing and adapter plate assembly are in alignment with dowel pins in valve body. Install 3/4 10 hex head screws (250 psi) or 3/4 10 hex nuts on studs (600 psi). Tighten screws or nuts to specified torque value. (Make certain two extra long 3/4 10 screws are installed in correct location.)

4 Attach loading spring (including adjusting screw and pin assembly and W reading spring puller rod) to spring hanger and pin assembly.

5 Position housing assembly on valve body. Install hex head screws (250 psi) or hex nuts on studs (600 psi) and torque to specified value.

6 Assemble Transmitter connecting link to adjustable range arm (Figure 11).

7 If metering plug stop screw settings have been disturbed, set stops as follows:

a Loosen two 10 32 screws holding lock plate.

b Lift metering plug stem until Transmitter pointer reads approximately 1/32 inch beyond 100% scale (assuming Transmitter calibration is correct).

c Hold valve stem in position and turn three fillister head stop screws down until screws touch top of metering plug stop washer.

d Lower metering plug stem to 0 position on scale. Tighten two 10 32 screws to lock stop screws in place.

8 Position cover on housing and adapter plate assembly. Install hex head screws (or hex nuts on studs) and torque to specified value.

9 Install and Adjust Area Meters on y. With cover installed, remove drain valve. Install 6 32 screw or threaded rod into metering plug stem and dampener rod assembly. Move screw or rod up and down to simulate full stroke of metering plug. Make certain binding or rubbing does not occur between dampener rod and center hole in cover. If binding does occur, loosen screws or hex nuts and shift cover slightly (movement will be limited by dowel pins) to insure clearance around dampener rod. If clearance problems still exist, refer to "Repositioning of Dowel Pins" Locate procedure applicable to Area Meter size.

Included in procedure will be steps for removing old dowel pins and relocating cover. Do not attempt to place Meter in service until clearance problems have been resolved. If binding or rubbing does not occur, remove 6 32 screw or threaded rod from dampener rod.

10 Replace drain plug in housing assembly.

11 Calibrate Area Meter as described in the "Complete Calibration Procedure."

12 After Meter has been calibrated, set tension on loading spring as described under "Resetting Loading Spring."

ROTATING TOPWORK ASSEMBLY

Rotation of topwork mechanism can be accomplished with minimum disturbance of calibration by carefully following the procedure outlined below.

NOTE: In all cases, flow thru the meter must be in accordance with arrow stamped on valve body flange.

1 Remove meter from service. Remove drain plug from housing assembly and allow fluid to drain from valve body.

2 Remove Transmitter cover. Disengage connecting link from adjustable range arm (Figure 11).

3 Remove sealing cap from bottom of housing assembly.

4 Screw spring puller rod (shipped with meter) into bottom of adjusting screw and pin assembly. Pull rod and back off two 3/16 inch nuts. Gradually release rod to prevent spring from snapping when tension is relieved. Leave spring puller rod assembled.

1 Inch Area Meter On y

1 Remove cap screws and separate cover from housing and adapter plate assembly.

2 Remove two 1/4 20 fillister head screws holding housing and adapter plate assembly to adapter plate.

3 While lifting housing and adapter plate assembly to clear pins grasp metering plug stem

and dampener rod assembly and hit simultaneously. Lift both assemblies until stem moves back and forth a sufficient amount to permit pin of drive lever assembly to slip free of bearing plates. Remove housing and adapter plate assembly.

4 Punch mark adapter plate and valve body. This will insure that adapter plate will not be installed in same position when reassembled.

5 Remove 3/8 16 hex head screws holding adapter plate to valve body.

NOTE It is not necessary to remove lockplate or disturb setting of stop screws when removing adapter plate from valve body.

6 Position adapter plate on valve body. Rotate adapter plate until alignment mark is 180 degrees from alignment mark on valve body. Install two 3/8 16 hex head screws finger tight.

7 Push bearing down (compressing spring) until bearing passes thru inside diameter of lockplate. Check clearance and concentricity of outside diameter of bearing to inside diameter of lockplate. Install remaining 3/8 16 hex head screws and torque to 20 ft lb.

8 Lower reversed housing and adapter plate assembly into position while grasping metering plug stem and dampener rod assembly and lifting until stem moves back and forth a sufficient amount to permit pin of drive lever assembly to slip into position between bearing plates. Lower both assemblies into position, making certain holes in housing and adapter plate assembly are in alignment with dowel pins in adapter plate. If assembly is impossible, refer to "Repositioning Dowel Pins".

9 Make certain pin of drive lever assembly is correctly located between bearing plates. Carefully check clearances between inside surface of drive lever assembly arms and outside diameter of bearing plates. If either arm is touching bearing plates, remove housing and adapter plate assembly.

10 Grind or file inside face of drive lever assembly arm (opposite of arm with pin). Remove all metal particles from inside housing. Reassemble housing and adapter plate assembly (step 8) and check clearance (step 9). If clearance is good

and no binding occurs, install two 1/4 20 hillster head screws and tighten. If a clearance problem still exists after grinding arm of drive lever assembly, proceed to "Repositioning Dowel Pins".

11 Assemble Transmitter connecting link to range arm and check zero adjustment. If parts have not been damaged and position of locknut on metering plug stem and dampener rod assembly has not been changed, zero adjustment should be correct. If zero adjustment is not correct, check calibration as outlined under "Complete Calibration Procedure".

12 Remove drain valve and reducer bushing from cover. Install reversed cover and a minimum of two 7/16 14 hex head screws.

13 Install 6 32 screw or threaded rod in top of metering plug and dampener rod assembly. Move screw or rod up and down to simulate full stroke of metering plug. Check for binding of internal components. Any misalignment will cause friction between hole in cover and metering plug stem and dampener rod assembly.

14 If clearance is good and no binding occurs, install remainder of 7/16 14 and torque to 30 ft lb. Proceed to step 16.

15 If binding occurs, disassemble cover. Remove two 3/16 inch dowel pins in housing and adapter plate assembly. Reassemble cover and reposition until vertical movement of metering plug stem and dampener rod assembly can travel full stroke of metering plug without binding. Secure cover using 7/16 14 screws. Locate two thru holes in cover. Drill two 3/16 inch holes (.1910 inch max), 7/32 inch deep in housing and adapter plate assembly. Remove cover and clean all metal particles from drilling area. Install two 3/16 inch dowel pins in new location. Reassemble cover. Install 7/16 14 hex head screws and torque to 30 ft lb.

16 Remove 6 32 screw or threaded rod from metering plug stem and dampener rod assembly. Install reducer bushing and drain valve assembly in cover.

17 Reassemble drain plug in housing assembly. Refer to "Resetting Loading Spring" for assembly of drain and sealing cap.

2 Inch Area Meter Only

1 Remove cap screws (250 psi) or hex nuts (600 psi) and separate cover from housing and adapter plate assembly

2 Remove two 1/4 20 fillister head screws holding housing and adapter plate assembly to valve body

3 While lifting housing and adapter plate assembly to clear dowel pins grasp metering plug stem and dampener rod assembly and lift simultaneously. Lift both assemblies until stem moves back and forth a sufficient amount to permit pin of drive lever assembly to slip free of bearing plates

NOTE It is not necessary to remove lockplate or disturb setting of stop screws when removing housing and adapter plate assembly

4 While lowering reversed housing and adapter plate into position grasp metering plug stem and dampener rod assembly and lift until stem moves back and forth a sufficient amount to permit pin of drive lever assembly to slip into position between bearing plates. Lower both assemblies into position making certain holes in housing and adapter plate assembly are in alignment with dowel pins in valve body. If assembly is impossible, refer to "Repositioning Dowel Pins"

5 Make certain pin of drive lever assembly is correctly located between bearing plates. Carefully check clearance between inside surface of drive lever assembly arms and outside diameter of bearing plates. If either arm is touching bearing plates, remove housing and adapter plate assembly

6 Grind or file inside face of drive lever assembly arm (opposite of arm with pin). Remove all metal particles from housing. Reassemble housing and adapter plate (step 4) and check clearance (step 5). If clearance is good and no rubbing or binding occurs install two 1/4 20 fillister head screws and tighten. If clearance problems still exist after grinding arm of drive lever assembly, proceed to "Repositioning Dowel Pins"

7 Assemble Transmitter connecting link to range arm and check zero adjustment. If parts have not been damaged and position of locknut

on metering plug stem and dampener rod has not been changed zero adjustment should be correct. If zero adjustment is not correct check calibration as outlined under "Complete Calibration Procedure"

8 Remove drain valve and reducer bushing from cover. Install reversed cover and a minimum of two 7/16 14 hex head screws (250 psi) or two 7/16 14 hex nuts (600 psi). Tighten screws or nuts finger tight

9 Install 6 32 screw or threaded rod in top of metering plug stem and dampener rod assembly. Slowly move screw or rod up and down to simulate full stroke of metering plug. Check for binding of internal components. Any misalignment will cause friction between hole in cover and metering plug stem and dampener rod assembly

10 If clearance is good and no binding occurs, install remainder of 7/16 14 screws or 7/16 14 hex nuts. Torque screws or nuts to 30 ft lb. Proceed to step 11

11 If binding occurs disassemble cover. Remove two 3/16 inch dowel pins in housing and adapter plate assembly. Reassemble cover and reposition until vertical movement of metering plug stem and dampener assembly can travel full stroke of metering plug without binding. Secure cover using 7/16 14 screws or 7/16 14 hex nuts. Locate two start holes in cover. Drill two 3/16 inch holes (1.910 inch max) 7/32 inch deep in housing and adapter plate assembly. Remove cover and clean metal particles from drilling area. Install two 3/16 inch dowel pins in new location. Reassemble cover. Install screws or nuts and torque to 30 ft lb

12 Remove 6 32 screw or threaded rod from metering plug stem and dampener rod assembly. Install reducer bushing and drain valve assembly in cover

13 Reassemble drain plug in housing assembly. Refer to "Resetting Loading Spring" for assembly of spring and sealing cap

4 Inch Area Meter Only

1 Remove hex nuts from studs and separate cover from housing and adapter plate assembly

Type JR13 Area Meter

7 Remove 3/4 10 hex head screws (250 psi) or 3/4 10 hex nuts (600 psi) holding housing and adapter plate assembly to valve body Note position of two extra long 3/4 10 hex head screws when removing

3 While lifting housing and adapter plate assembly to clear dowel pins, grasp metering plug stem and lift simultaneously. Lift both assemblies until stem moves back and forth a sufficient amount to permit pin of drive lever assembly to slip free of bearing plates.

NOTE It is not necessary to remove lockplate or disturb setting of stop screws when removing housing and adapter plate assembly

4 For 600 psi meter only Note difference in length of two studs in valve body. Interchange two long studs with two short studs diametrically opposite

5 While lowering reversed housing and adapter plate assembly into position, grasp metering plug stem and lift until stem moves back to slip into position between bearing plates. Lower both assemblies into position, making certain holes in housing and adapter plate are in alignment with dowel pins in valve body. If assembly is impossible, refer to "Repositioning Dowel Pins"

NOTE When installing housing and adapter plate assembly (600 psi meter) use care to prevent damage to threads of valve body studs

6 Make certain pin of drive lever assembly is correctly located between bearing plates. Carefully check clearance between inside surface of drive lever assembly arms and outside diameter of bearing plates. If either arm is touching bearing plates, remove housing and adapter plate assembly

7 Grind or file inside face of drive lever assembly arm (opposite of arm with pin). Remove all metal particles from housing. Reassemble housing and adapter plate (step 5) and check clearance (step 6). If clearance is good and no rubbing or binding occurs, install 3/4 10 hex head cap screws or 3/4 10 hex nuts and retorque to 160 ft lb (Make certain two extra long 3/4 10 screws are installed in correct location). If clearance problems still exist after grinding, proceed to "Repositioning Dowel Pins"

8 Install 6-32 screw or threaded rod in top of metering plug stem. Slowly move screw or rod up and down to simulate full stroke of metering plug. Check for binding of internal components. If binding occurs, locate problem area. Disassemble housing and adapter plate and rework or replace parts

9 Assemble Transmitter connecting link to adjustable range arm and check zero adjustment. If parts have not been damaged and position of lock nut on metering plug stem has not been changed, zero adjustment should be correct. If zero adjustment is not correct, check calibration as outlined under "Complete Calibration Procedure"

10 Remove 6-32 screw or threaded rod from metering plug stem

11 Assemble reversed cover and install 1/2-13 hex nuts. Torque nuts to 50 ft lb

12 Reassemble drain plug in housing assembly. Refer to "Resetting Loading Spring" for assembly of spring and sealing cap

REPOSITIONING OF DOWEL PINS

NOTE It is necessary to allow repositioning of components due to clearance problems, installation of new dowel pins is recommended. This procedure would assure correct reassembly at a later date in addition to holding components in position when installing and tightening the attaching screws or nuts

Follow procedure below applicable to specific Area Meter

1 Inch Area Meter Only

1 If initial assembly of housing and adapter plate was impossible or clearance problems still exist after grinding arm of drive lever assembly, remove housing and adapter plate assembly from adapter plate

2 Remove two 1/4 inch dowel pins from adapter plate. Drill holes an additional 3/16 inch deep. Reassemble pins in adapter plate making certain pins are flush with surface of adapter plate. If necessary, carefully grind excess portion of pins

3 Reassemble reversed housing and adapter plate assembly. When pin of drive lever assembly is between bearing plates, reposition housing until clearance is obtained between inside surface of drive lever assembly arms and outside diameter of bearing plates. Secure housing using two 1/4 20 fillister head screws.

4 Repositioning of housing and adapter plate assembly affects clearance between metering plug stem and dampener rod assembly and cover. Remove two 3/16 inch dowel pins from housing and adapter plate assembly.

5 Remove drain valve and reducer bushing from cover. Position cover on housing and adapter plate assembly. Install 6 32 screw or threaded rod in top of metering plug stem and dampener rod assembly. Reposition cover until vertical movement of stem and dampener rod assembly can travel full stroke of metering plug without binding. Secure cover using 7/16 14 hex head screws and torque to 30 ft lb.

6 Locate two thru holes in cover. Drill two 3/16 inch holes (1910 inch max), 1/4 inch deep in housing and adapter plate assembly. Remove cover and install two 3/16 x 1/2 inch dowel pins in new location.

7 Locate two thru holes in housing and adapter plate assembly. Drill two 1/4 inch holes (254 inch max), 5/16 inch deep in adapter plate. Remove housing and adapter plate assembly. Install two 1/4 inch dowel pins in new location.

8 Reassemble housing and adapter plate assembly. Install two 1/4 20 fillister head screws and tighten.

9 Replace cover and install 7/16 14 hex head screws. Torque screws to 30 ft lb.

10 Remove 6 32 screw or threaded rod from metering plug stem and dampener rod assembly. Install reducer bushing and drain valve in cover.

11 Install drain plug in housing assembly. Refer to "Resetting Loading Spring" for assembly of spring and sealing cap.

2 Inch Area Meter Only

1 If initial assembly of housing and adapter plate was impossible or clearance problems still exist after grinding arm of drive lever assembly

remove housing and adapter plate assembly from valve body.

2 Remove two 1/4 inch dowel pins from valve body. Drill holes an additional 3/16 inch deep. Reassemble pins in valve body, making certain pins are flush with surface of valve body. If necessary, carefully grind excess portion of pins.

3 Reassemble reversed housing and adapter plate assembly. When pin of drive lever assembly is between bearing plates, reposition housing until clearance is obtained between inside surface of drive lever assembly arms and outside diameter of bearing plates. Secure housing using two 1/4 20 fillister head screws.

4 Repositioning of housing and adapter plate assembly affects clearance between metering plug stem and dampener rod assembly and cover. Remove two 3/16 inch dowel pins from housing and adapter plate assembly.

5 Remove drain valve and reducer bushing from cover. Position cover on housing and adapter plate assembly. Install 6 32 screw or threaded rod in top of metering plug stem and dampener rod assembly. Reposition cover until vertical movement of stem and dampener rod assembly can travel full stroke of metering plug without binding. Secure cover using 7/16 14 hex head screws (250 psi) or 7/16 14 hex nut (600 psi) and torque to 30 ft lb.

6 Locate two thru holes in cover. Drill two 3/16 inch holes (1910 inch max), 1/4 inch deep in housing and adapter plate assembly. Remove cover and install two 3/16 x 1/2 inch dowel pins in new location.

7 Locate two thru holes in housing and adapter plate assembly. Drill two 1/4 inch holes (254 inch max), 5/16 inch deep in valve body. Remove housing and adapter plate assembly. Install two 1/4 inch dowel pins in new location.

8 Reassemble housing and adapter plate assembly. Install two 1/4 20 fillister head screws and tighten.

9 Replace cover and install 7/16 14 hex head screws (250 psi) or 7/16 14 hex nuts (600 psi) and torque to 30 ft lb.

10 Remove 6 32 screw or threaded rod from metering plug stem and dampener rod assembly. Install reducer bushing and drain valve in cover.

Type JR13 Area Meter

11 Install drain plug in housing assembly Refer to "Resetting Loading Spring" for assembly of spring and sealing cap

4 Inch Area Meter Only

1 If initial assembly of housing and adapter plate was impossible or clearance problems still exist after grinding arm of drive lever assembly, remove housing and adapter plate assembly from valve body

2 Remove two 1/4 inch dowel pins from valve body Drill holes an additional 3/16 inch deep Reassemble pins in valve body, making certain pins are flush with surface of valve body If necessary, carefully grind excess portion of pins

3 Reassemble reversed housing and adapter plate assembly When pin of drive lever assembly is between bearing plates, reposition housing until clearance is obtained between inside surface of drive lever assembly arms and outside diameter of bearing plates Secure housing using 3/4 10 hex head screws (250 psi) or 3/4 10 hex nuts (600 psi) and torque to 160 ft lb (Make certain two long 3/4 10 hex head screws are in correct location)

4 Install 6 32 screw or threaded rod in top of metering plug stem Slowly move screw or rod up and down to simulate full stroke of metering plug Check for binding of internal components If binding occurs, locate problem area Disassemble housing and adapter plate assembly and rework or replace parts

5 If no binding occurs, locate two thru holes in housing and adapter plate assembly Drill two 1/4 inch holes (254 inch max) 5/16 inch deep in valve body Remove housing and adapter plate assembly Install two 1/4 inch dowel pins in new location

6 Reassemble housing and adapter plate assembly Install 3/4 10 hex head screws (250 psi) or 3/4 10 hex nuts (600 psi) and torque to 160 ft lb

7 Remove 6 32 screw or threaded rod from metering plug stem

8 Position reversed cover on housing and adapter plate assembly Install 1/2 13 hex nuts and torque to 50 ft lb

9 Reassemble drain plug in housing assembly Refer to "Resetting Loading Spring" for assembly of spring and sealing cap

CALIBRATING THE AREA METER

The Type JR13 Area Meter (except those 4 inch meters for measurement of viscous fluids) is factory calibrated before shipment and the adjustment points are marked with red paint The meter should require no further adjustment However, before placing in service, make the adjustment checks outlined under "Transmitter Adjustment Checks"

These adjustment checks consist of checking the flow and output pressure pointer readings at 0", 50" and 100" scale To check the readings at 50" and 100", it is necessary to assemble Calibrating Micrometer (Part No 6638111) and Adapter (Part No 6638111) to the top of the metering plug stem and cover and then set the meter for the desired stroke position To assemble and set the micrometer, refer to "Positioning Metering Plug" below

POSITIONING METERING PLUG

1 For 1 inch and 2 inch Area Meters Remove dampener rod from metering plug stem as outlined in step 3 under "Installing the Area Meter" Do not discard rod

2 With meter removed from service (no flow thru meter), remove drain plug from bottom of spring housing (Figure 14) and drain meter

3 Remove sealing cap from bottom of spring housing

4 Attach spring puller (shipped with instrument) to lower end of adjustment screw (Figure 9) Tighten spring puller bracket against bottom of spring housing with 6 32 hex nut

5 Back off lock nut and adjustment nut from adjustment screw to free spring Do not allow

Type JR13 Area Meter

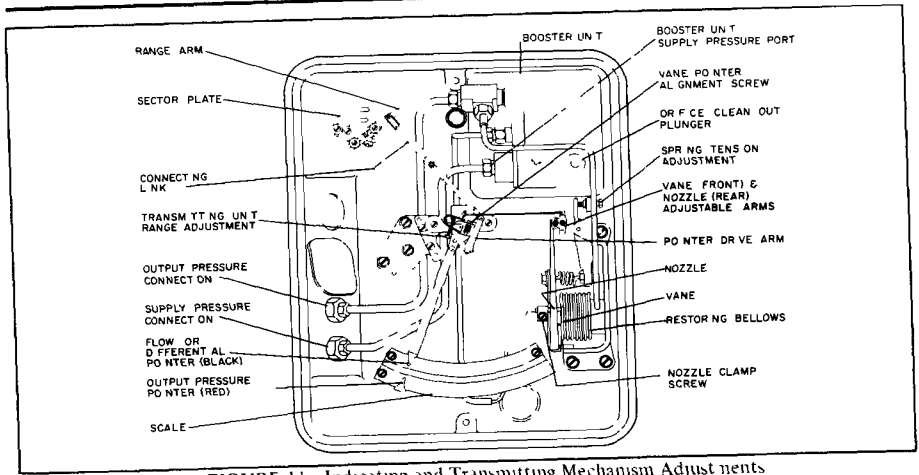


FIGURE 11 Indicating and Transmitting Mechanism Adjustments

d Remove micrometer and adapter from body cover

e For 1 inch and 2 inch Area Meter Remove meter body cover. Replace reducer bushing and drain valve assembly in cover. Screw dampener rod into threaded extension of metering plug stem. Replace cover on meter body.

f For 4 inch Area Meter Replace drain valve in meter body cover.

TRANSMITTER ADJUSTMENT CHECKS

1 With no flow thru meter, flow pointer and output pressure pointer should read zero scale.

a If flow pointer does not read zero scale, adjust pointer zero adjustment (Figure 13) until reading is correct.

b If output pressure pointer does not read zero scale, adjust nozzle pointer alignment screw (Figure 13) until reading is correct.

2 Using the Calibrating Micrometer as outlined under "Positioning Metering Plug", set metering plug at 50% and 100% stroke. Flow and output pressure pointers should read 50% and

100% scale, respectively. If not, perform "Complete Calibration Procedure" outlined below.

3 If readings are correct, refer to "Disassembling Micrometer" and "Resetting Loading Spring".

COMPLETE CALIBRATION PROCEDURE

If meter is being calibrated following corrective maintenance or repair, perform the steps outlined under "Positioning Metering Plug" before proceeding further.

Flow (Black) Pointer

1 Set metering plug at 50% stroke. Flow pointer should read 50% scale $\pm 1/32$ inch. If pointer reads correctly, proceed to step 2. If pointer reads incorrectly, make the necessary adjustments in steps 2, 3, and 4.

2 Check for parallel linkage (Figure 11).

a Range arm Line A should be at right angles to connecting link.

b Connecting link should be at right angles to Line B (thru pointer drive arm pivot and lower connecting pin of connecting link).

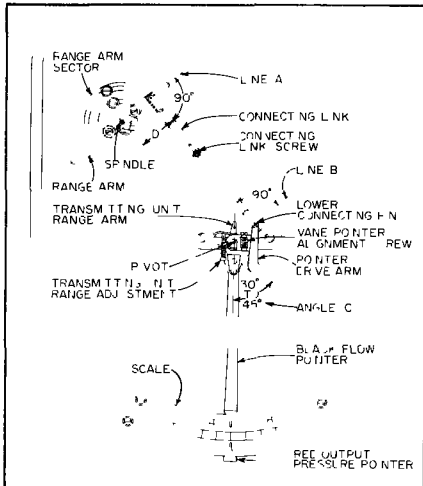


FIGURE 17 Spindle and Flow Pointer Linkage at 50% Scale

3 If parallel linkage exists but pointer does not read 50% scale turn pointer zero adjustment screw (Figure 3) until pointer reads correctly. Proceed to step 5.

4 If parallel linkage does not exist in step 3 above, make the following adjustments:

a Loosen two range arm sector screws and connecting link screw.

b Rotate range arm sector until range arm is at right angles with connecting link. Adjust length of connecting link until the link is at right angles to Line B.

c Tighten screws.

d With metering plug set for 50% stroke and parallel linkage established, pointer should read 50% scale. If not, turn pointer zero adjustment screw until pointer reads correctly.

5 Set metering plug at 0% stroke. Flow pointer should read zero scale +1.32 inch. If pointer reads correctly, proceed to step 7. If pointer reads incorrectly, make the necessary adjustments outlined below.

a Return metering plug to 50% stroke.

b Loosen range arm screws.

c If pointer reading was greater than zero lengthen range arm slightly, increasing Dimension D. Tighten screws.

d If pointer reading was less than zero, shorten range arm slightly, decreasing Dimension D. Tighten screws.

e Check for parallel linkage in steps 1, 2, 3 and 4.

6 Set metering plug for 0% stroke. If pointer still reads incorrectly, repeat steps 3 and 4 until correct pointer readings are obtained for 50% and zero scale.

7 Set metering plug for 100% stroke. Flow pointer should read 100% scale. If pointer reads correctly, set metering plug for 50% zero and 100% scale and check respective scale readings. Then proceed to "Output Pressure" below. If pointer reads incorrectly, make the necessary adjustments outlined below.

a Loosen connecting link screw.

b If pointer reading was greater than 100% scale, tighten connecting link slightly. Tighten screw.

c If pointer reading was less than 100% scale, shorten connecting link slightly. Tighten screw.

d Return metering plug to 50% stroke. If pointer does not read 50% scale, turn pointer zero adjustment screw to obtain correct reading.

8 Set metering plug for 0% stroke. If pointer reads zero scale, proceed to step 10 below. If pointer does not read zero scale, repeat steps 5a, b, c, and d only, then make the following adjustments:

a Loosen range arm sector screws and rotate sector until range arm is at right angles with connecting link.

b Reset pointer on 50% scale by turning pointer zero adjustment screw.

9 Repeat step 8 until pointer reads correctly at 50% and zero scale.

10 Repeat steps 7, 8, and 9 until pointer reads correctly at zero, 50%, and 100% scale.

11 Adjust max travel stop screws (Figure 10) to limit pointer to 1/16 1/32 inch beyond the 100% scale mark, when the plug is at its highest position.

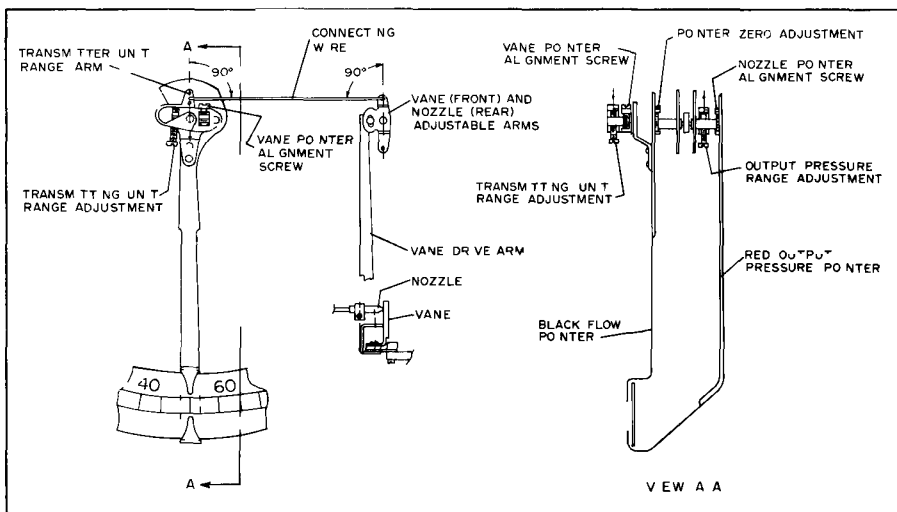


FIGURE 13 Indicating Pointer Adjustments

Output Pressure

Insert an accurate pressure gage (0-30 psig) in output pressure line or connect gage directly into output pressure connection (see Figure 11). If Transmitter is being bench tested, avoid pulsations in the pressure by inserting a volume chamber or 30 feet of 1/4 inch tubing in output pressure line between Transmitter and test gage.

2 Apply supply pressure to Transmitter

3 Disconnect connecting link from pointer drive arm at lower connecting pin (Figure 13) so black level pointer may be moved freely by hand.

4 Manually position black level pointer at 50% scale. Output pressure should read 15 psig for 3-27 range or 9 psig for 3-15 range. If not, adjust vane pointer alignment screw (Figure 13) to position transmitting unit range arm so that left end of connecting wire is on extended centerline of black pointer. Reset output pressure to midrange value by adjusting spring tension adjustment (Figure 11).

5 Manually position black pointer at zero and 100% scale and observe output pressure readings

on test gage. If red pointer is hitting mounting bosses, turn nozzle pointer alignment screw slightly to shorten pointer travel. Gage should read 3 and 27 psig for 3-27 range or 3 and 15 psig for 3-15 range. If pointer reads correctly, proceed to "Output Pressure (Red) Pointer". If not, proceed to step 6 or 7, whichever is applicable.

6 If output pressure is linear (that is, output pressure range evenly divided on both sides of midrange value), turn transmitting unit range adjustment screw (Figure 12) counterclockwise to decrease range or clockwise to increase range.

7 If output pressure range is non linear, (that is, not equally divided on both sides of midrange loading pressure) position black pointer to 50% scale.

a Compare output loading pressure with pressures read at 0% and 100% and determine difference in pressure spans between upper and lower halves of scale.

b Adjust vane pointer alignment screw to change output pressure (in direction of largest pressure span) by an amount equal to one half the difference as determined in step a.

c Turn spring tension adjustment to re-turn output loading pressure to proper midrange value.

5 Repeat steps 4, 5, 6 and 7 until correct output pressure readings are obtained at maximum, minimum, and midrange scale values. Then proceed to "Output Pressure (Red) Pointer". If, however, correct output pressure readings cannot be obtained, proceed to step 9.

9 With black pointer at midrange scale, make the following checks:

a Check that nozzle is perpendicular to vane. If not, loosen nozzle clamp screw (Figure 11) and adjust nozzle position until vane is vertical.

b Vane (front) drive arm should be parallel to center line of black pointer and at 90 degree angle with connecting wire (Figure 13). If not, adjust vane pointer alignment screw and vane adjustable arm until the above relationship exists.

10 Repeat steps 3 thru 9 until correct midrange, minimum, and maximum range output pressure readings are obtained.

Output Pressure (Red) Pointer

The red output pressure pointer should give the same scale readings as the black flow pointer at all times when the black pointer and transmitting unit are in correct calibration. The red pointer indicates that the output pressure is correct for measured flow if both red and black pointers read the same.

1 Manually position black flow pointer at 50% scale. Red output pressure pointer should read 50% scale. If pointer reads correctly, proceed to step 2. If not, turn nozzle pointer alignment screw (Figure 13) until pointer reads correctly.

2 Manually position black pointer at minimum and maximum scale. Red pointer should read minimum and maximum scale respectively. If pointer reads correctly, remove micrometer as described under "Disassembling Micrometer". If not, make the necessary adjustments below.

a If red pointer motion was linear (that is, pointer motion evenly divided on both sides of midrange value), turn output pressure range ad-

justment (Figure 13) clockwise to decrease motion or counterclockwise to increase motion.

b If red pointer motion was nonlinear (that is, pointer motion not evenly divided on both sides of midrange value), loosen two screws on nozzle adjustable arm and:

(1) rotate adjustable arm clockwise if motion was greater from 50% to 100% scale or

(2) rotate adjustable arm counterclockwise if motion was greater from 50% to zero scale.

c Tighten screws on nozzle adjustable arm.

3 Repeat steps 1 and 2 until correct red output pressure pointer readings are obtained for 50%, 100%, and zero scale.

RESETTING LOADING SPRING

NOTE Make certain loading spring is at ambient temperature before adjusting or resetting.

1 With spring puller attached to adjustment screw, and locknut, adjustment nut, and washer in position against spring puller bracket (Figure 9), turn 6/32 hex nut until square portion of adjustment screw passes thru square hole. If there is interference, apply a wrench to flat on end of spring puller until free passage is attained.

2 When square portion of adjustment screw has passed thru square hole, start adjustment nut on adjustment screw.

3 Apply weights to spring puller finger ring until total weight including weight of spring puller equals required spring tension as given in Table I.

4 Back off locknut and adjustment nut until washer barely touches bottom of spring puller ring. Tighten locknut and adjustment nut against washer. If necessary, reposition adjustment nut and locknut on adjustment screw until setting is correct.

5 Remove weights and spring puller. Replace sealing cap.

TABLE I

Area Meter		Standard Differential Pressure (psi)	Total Dead Weight (lbs)*
Size (Inches)	Type		
1"	JR1323 and JR1343	10 psi	9 lbs
2"	JR1323 and JR1343	10 psi	17 1/2 lbs
4"	JR1322 and JR1342	6 psi	58 lbs

* Includes spring plunger and calibration weight.

BOOSTER UNIT

1 Remove Booster Unit from Transmitter as outlined under "Booster Unit Replacement"

2 With Booster at test bench, make the following connections

a Connect an accurate air supply to Booster supply connection "S", 30 psig for 3 to 27 psig range, 18 psig for 3 to 15 psig range

b Install accurate test gage at Booster output tee connection Plug connection from Booster to restoring bellows

c Install accurate test gage in line from Booster Unit nozzle connection "N" (Gage must accurately measure 2.0 to 3.6 psig)

d Extend short length of rubber tubing with adjustable pinch clamp from nozzle to control flow of air from nozzle

3 Adjust pinch clamp to obtain 3.5 psig for 3 to 27 or 2.0 psig for 3 to 15 range on test gage

4 Output pressure should be approximately 15 psig for 3 to 27 range or 9 psig for 3 to 15 range. If not, adjust two concentric adjustment screws in center of lower housing (Item 25, Figure 29). Turn outer screw (Item 29, Figure 29) clockwise to decrease or counterclockwise to increase output pressure

5 With nozzle back pressure at 3.5 (or 2.0) psig, and Booster unit output pressure at 15 (or 9) psig, turn inner screw (Item 27, Figure 29) clockwise until output pressure begins to decrease. Then turn inner screw two turns counterclockwise

6 Remove tee, pinch clamp, plug, and supply and output connections. Perform "Transmitter Adjustment Checks" before returning to operation

HOW THE AREA METER OPERATES

The Type JR13 Area Meter Transmitter is shown in Figure 14. The meter consists of a measuring mechanism and a indicating and transmitting mechanism.

MEASURING MECHANISM

The measuring mechanism is contained in a housing (similar to a valve body) which consists of an internal cage, a metering plug, and a loading spring connecting the metering plug to the bottom of the spring housing.

The indicating and transmitting mechanism (Figure 11) consists of a pointer and scale, a vane nozzle assembly and a booster unit. Refer to "Transmitting Mechanism" for a complete description of the transmitting unit.

Fluid flowing into the internal cage (Figure 14) lifts the metering plug upward. As the plug moves, it uncovers the ports of the cage allowing the fluid to flow thru the cage. Upward motion of the plug is opposed by the downward force of the loading spring. The displacement of the plug is directly proportional to the rate of flow while force of the spring remains constant.

Motion of the metering plug is directly transmitted thru a spindle and connecting linkage to position the indicating pointer and the vane of the transmitting mechanism. The position of the pointer and vane reflects the position of the metering plug. Since the output signal developed by the transmitting mechanism is directly proportional to the vane position, the output signal is also directly proportional to the metering plug position and to the measured rate of flow.

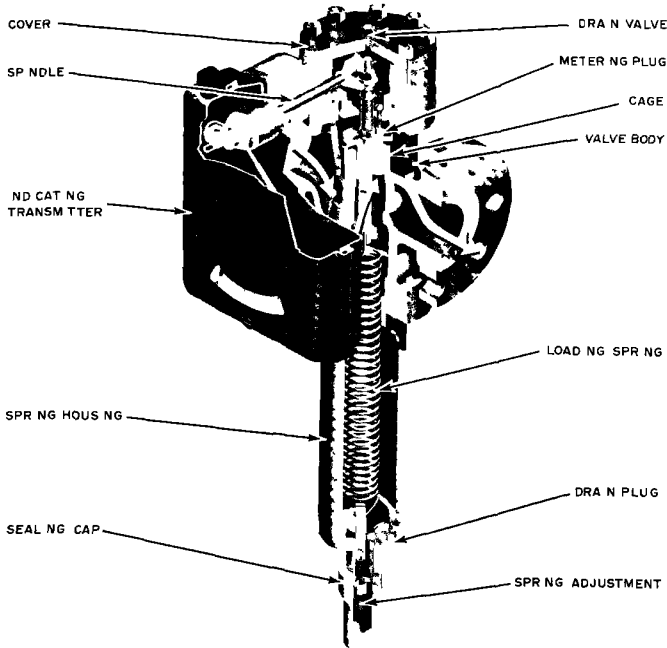


FIGURE 14 Type JR13 Area Meter

The output pressure pointer should always be opposite the flow indicating pointer to indicate that the output signal is proportional to the measured rate of flow.

TRANSMITTING MECHANISM

The transmitting mechanism consists of a vane/nozzle assembly and a Booster Unit. The vane is linked to the indicating pointer (black) so that vane position corresponds to the measured flow. When the measured flow is constant the vane and nozzle are in their "at balance" positions and the pressure in the Booster bellows is maintained at a value which holds the U beam in an approximately horizontal position (inlet and exhaust valves closed).

An increase in measured flow repositions the spindle indicating pointer. This movement, so

causes the vane to move closer to the nozzle, retarding the flow of air from the nozzle and increasing pressure in the Booster bellows. Expansion of the bellows pulls the U beam down, opening the inlet valve (as the U beam pivots at the diaphragm seals) and increasing the pressure in Chamber 3. The inlet/exhaust valve (Figure 16) is spring loaded downward (downward motion of the U beam end closes the exhaust valve and opens the inlet valve, Sketch A; upward motion of the U beam end closes the inlet valve and opens the exhaust valve, Sketch B).

Increased pressure in Chamber 3 is applied to the restoring bellows, expanding the bellows and moving the nozzle away from the vane. When pressure in Chamber 3 becomes great enough to move the nozzle to its "at balance" position, (1) the rate of air flow from the nozzle and the pressure in the Booster bellows return to their "at

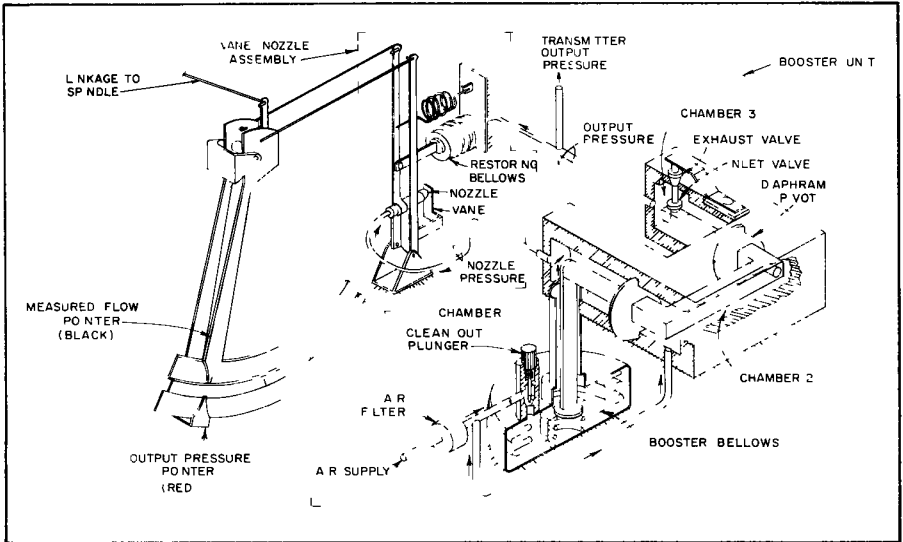


FIGURE 15 Schematic of Booster Unit Operation

balance" values, (2) the U beam returns to its horizontal position, and (3) the inlet and exhaust valves close, maintaining the Booster Unit output pressure at a new increased value

When the measured flow decreases, all movement is in the opposite direction of that described above and the Transmitter output pressure is maintained at a new decreased value proportional to the decreased measured flow

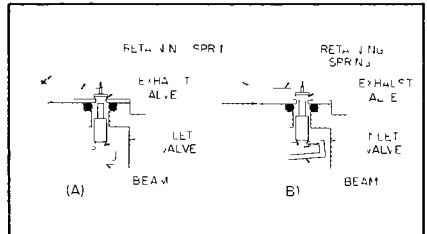


FIGURE 16 Booster Unit Inlet-Exhaust Valve



CORRECTION FACTORS

Bailey area meters operate on the principle that flow through an opening or restriction creates a differential pressure. The differential pressure is established by spring tension and is maintained constant while the opening is varied as required to permit the flow to pass. A measurement of opening is thus a measurement of flow rate. This relationship has a linear characteristic since the differential pressure is held constant.

An area meter must be calibrated for a specified fluid density, and is sensitive to changes from that specified density. If design operating conditions are not maintained, a correction factor or combination of factors must be applied to meter readings to obtain corrected flow. Instruction Section G99 2 provides correction factors for water and other fluids, but since the area meter is used almost exclusively for fuel oil measurement, which involves some additional considerations, the subject of correction factors for fuel oil measurement is described below.

- CF $\sqrt{\frac{G_{fd}}{G_{fd}}} \times \frac{G_{bd}}{G_{ba}}$
- CF Multiplying factor for chart or integration
- G_{fd} Specific gravity at flowing temperature, actual value
- G_{fd} Specific gravity at flowing temperature, design value
- G_{bd} Specific gravity at 60/60F, design value
- G_{ba} Specific gravity at 60/60F, actual value

The ratio G_{fd}/G_{fd} may be determined from Figure 18.

SPECIFIC GRAVITY

Changes in density caused by the volumetric expansion on heating are referred to as changes in specific gravity. The diagonal lines of Figure 17 represent this change in specific gravity with temperature for petroleum oils of constant composition, and of 0.75 to 1.10 base specific gravity, referred to water at 60F. Figure 18 shows the correction factor for the new specific gravity at the changed temperature. This specific gravity factor applies whether the flowing units are in weight or volume, since it is understood that a unit of volume is at a standard or base temperature (60F) rather than at the flowing temperature.

VISCOSITY CORRECTION

1 inch and 2 inch area meters are sensitive to viscosity, and are flow calibrated at the specified viscosity to remove this effect. Should the flowing viscosity later be changed it will be necessary to take this into account by introducing an empirically derived correction factor F_v.

- CF $\sqrt{\frac{G_{fd}}{G_{fd}}} \times \frac{G_{bd}}{G_{ba}} \times F_v$
- F_v Viscosity factor, for the style (port size) of the meter

Figures 19 thru 23 are flow viscosity correction curves for 1 inch and 2 inch area meters.

OIL COMPOSITION

Should an oil of a different composition be used, the specific gravity at base or standard condition may change as well as at flowing condition. In this case it is necessary to take this specific gravity ratio into account, and the revised correction factor becomes

RECALIBRATION

The use of correction factors can be eliminated by recalibrating the area meter for the new operating conditions. Determine the new maximum stroke required by dividing the original maximum stroke by CF. Then refer to calibration procedure on page 19.

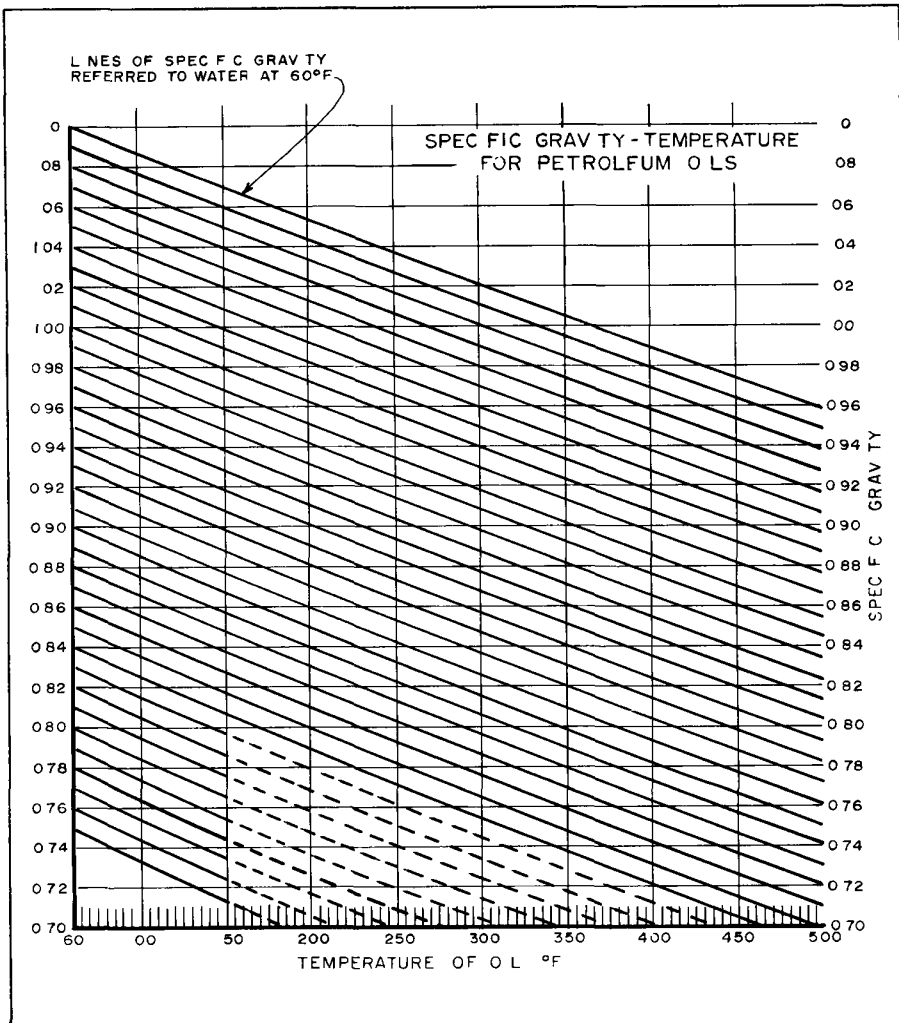


FIGURE 17 Temperature Variations for Petroleum Oils

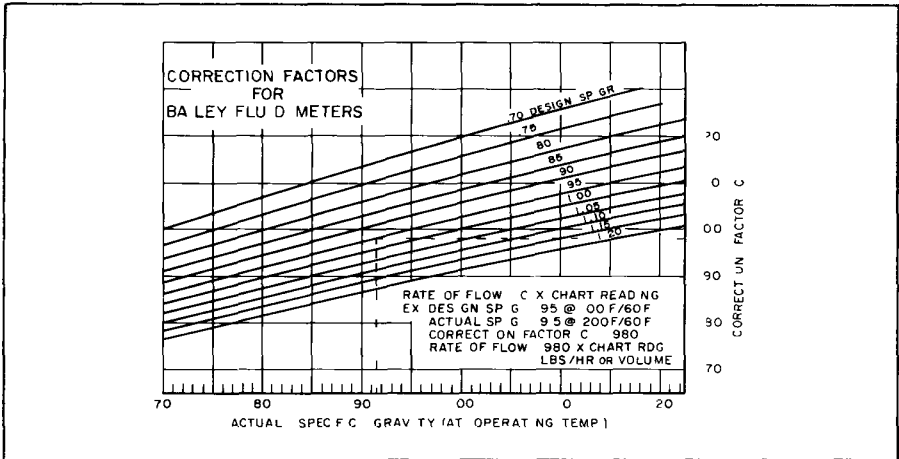


FIGURE 18 Specific Gravity Correction Factors

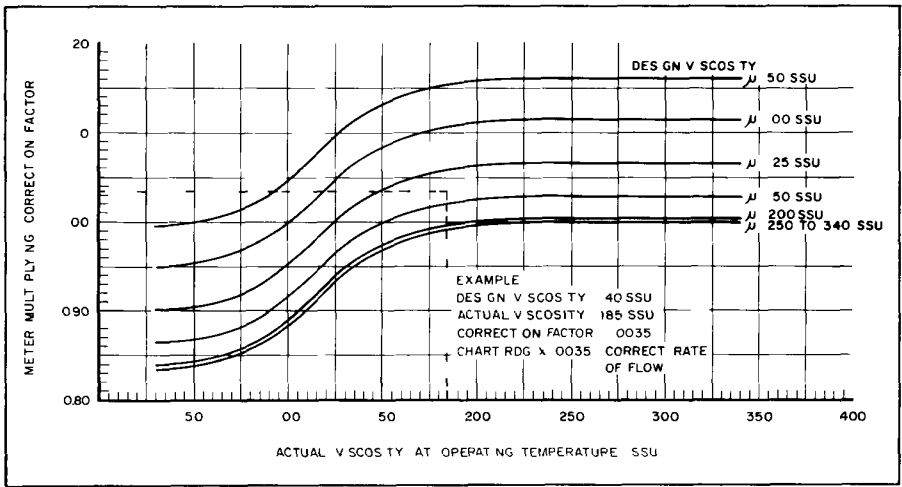


FIGURE 19 Flow Viscosity Correction Factor for 1 inch, Stv e F 70 JR13 Area Meter

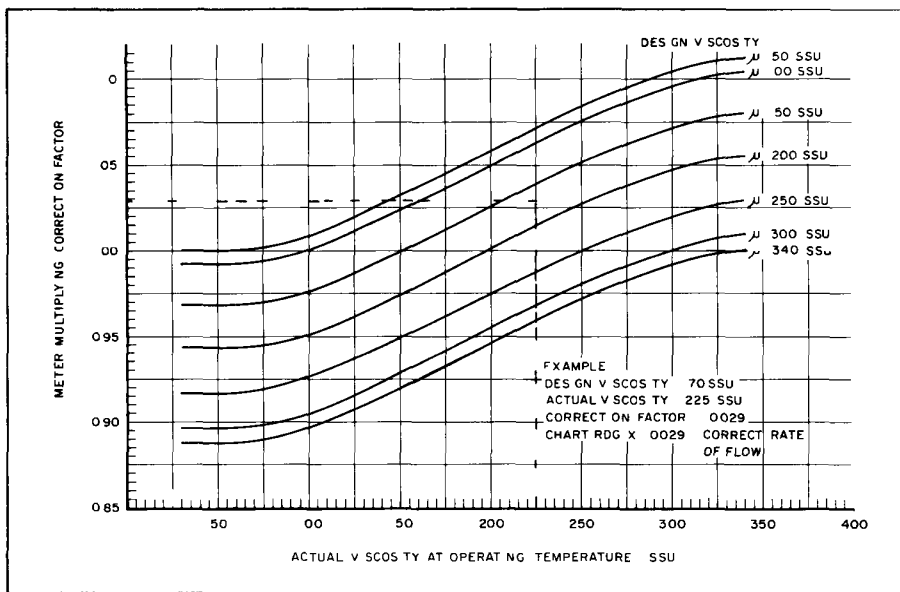


FIGURE 20 Flow Viscosity Correction Factor for 1 inch, Style F01, JR13 Area Meter

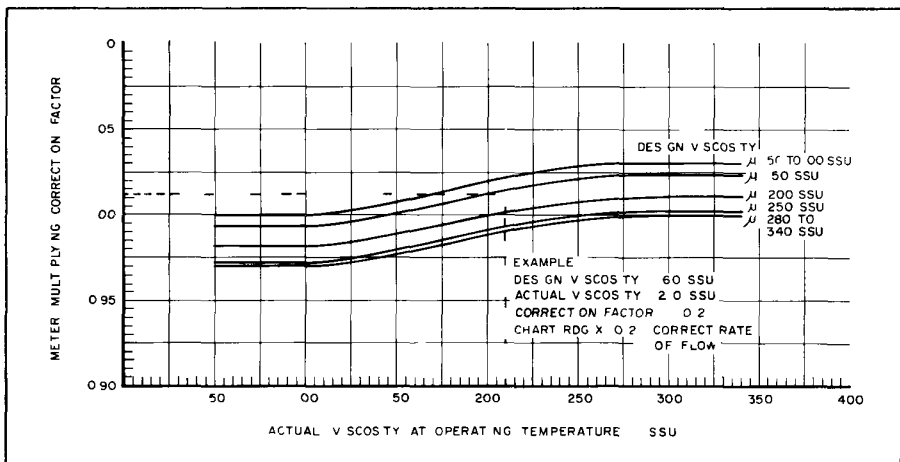


FIGURE 21 Flow Viscosity Correction Factor for 1 inch, Style F02, JR13 Area Meter

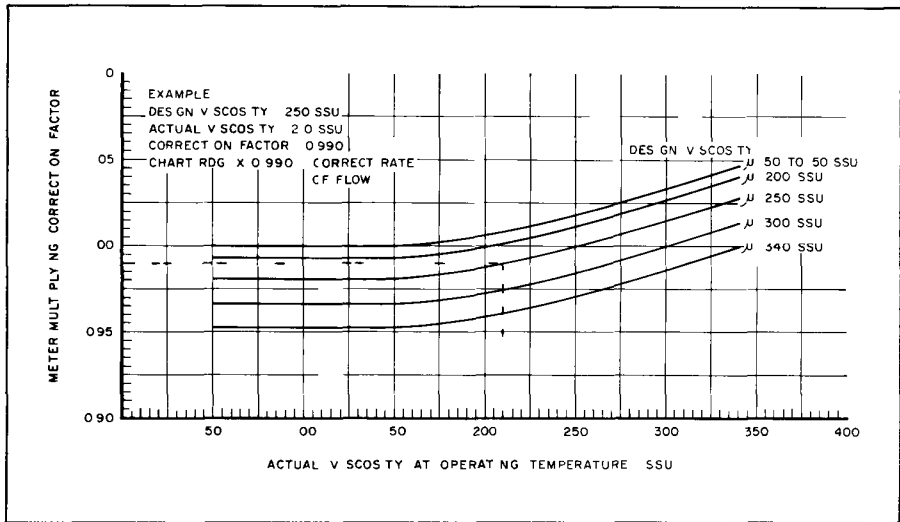


FIGURE 22 Flow Viscosity Correction Factor for 1 inch, Style F43, JR13 Area Meter

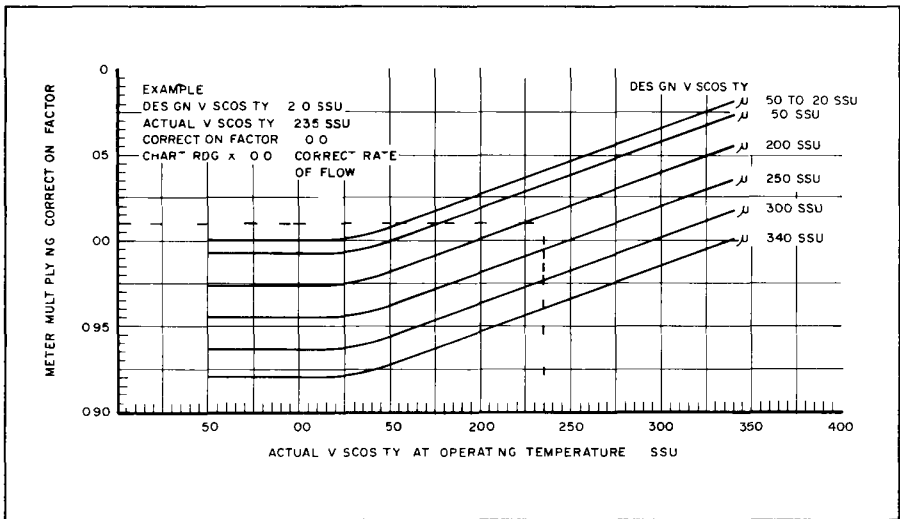
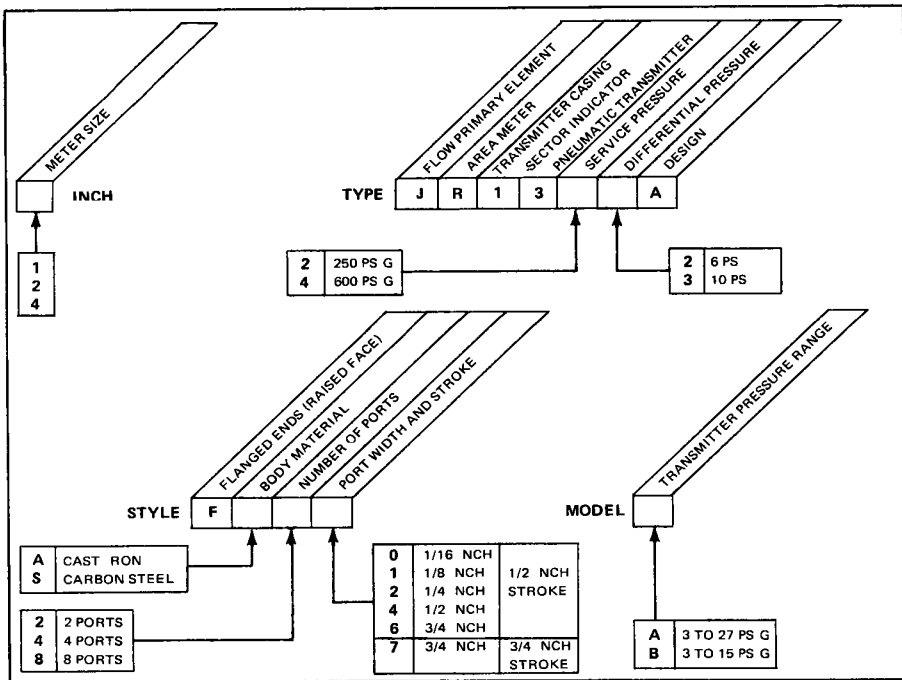


FIGURE 23 Flow Viscosity Correction Factor for 2 inch, Style F44, JR13 Area Meter

EXPLANATION OF NOMENCLATURE



An "X" in any Nomenclature position indicates that the feature is special. An "X" as a suffix indicates that the unit includes some special feature not covered by Nomenclature.

REPLACEMENT PARTS

SPARE PARTS KITS

The Spare Parts Kits shown in Figures 25 thru 29 should be carried in stock. Specify the Spare Parts Kit part number to order a complete kit.

ORDERING INDIVIDUAL PARTS

Figures 24 and 25 are Parts Drawings for the Indicating and Transmitting mechanism. Figures 26 thru 29 are Parts Drawings for the Type JR13 Area Meter. Normally, these drawings apply to the instruments furnished. However, there may be individual differences in specific meters because of

1 Design changes made since the printing of this Instruction Section.

2 Special design of equipment furnished to make it more suitable for special applications.

Therefore, when ordering parts, assure receipt of correct replacements by specifying on order:

a The complete Nomenclature and all information stamped on nameplate (Type, Style, Model, Loading Range, Head, Stroke, etc.) of instrument for which parts are desired.

b The Parts Drawing on which each part is illustrated. (The Parts Drawing Number is given in the Figure caption.)



TEM	PART NO	NAME	TEM	PART NO	NAME	TEM	PART NO	NAME
2	531140 ² 98173 16	COVER SCREW 2 REQD RETA N NG R NG 2	30	SEE TABLE	TYPE A PLA N R	56	440X1 2	STN STL MACH SCR
					WASHER AS REQD	57	688C1 1	SPR NG ADJ JSTMENT
3	6885-1	COVER ASSY NCLUDES TEMS 3A THRU 9	31	537612 28	SUPPLY CONNECTOR			ARM
3A	6885-1	COVER	32	537612 27	LOAD NG CONNECTOR	58	6841	P VOT PRESS F T
4	1962400 1	STYLE PLATE	33	6 32X5 16	PAN HD MACH SCR AS REQD	59	688 3	BELLOWS BEAM ASSY
5	68522	GASKET	34	SEE TABLE	SHHPRF LKWASH AS REQD	60	688 7	VANE & OPERAT NG LEVER ASSY
b	68 169 1	W NDOW	35	6 32	HEX NUT AS REQD	61	68834	CLAMP BLOCK
7	51 184 3	CLAMP 2 REQD	36	68845	SUPPLY A R L NE	67	4 40X5 16	PAN HD STN STL MACH SCR AS REQD
8	NO 2X3 8	PAN HD HD +HMG SCR TYPE B AS REQD	37	68846 1	LOAD NG A R L NE	63	NO 4 SAE	STN STL LKWASH AS REQD
9	5316543 1	SEAL NG STR P	38	19517 4	TEE	64	68 t6 1	NOZZLE A R L NE
10	SEE TABLE	DR VE ARM	39	6 3 2 X 4	PAN HD SEMS EXT AS REQD	65	951051-5	MALE CONNECTOR
	SEE TABLE	SECTOR PLATE	40	68839 1	CAP LLARY CL P	66	68841	OVERTRAVEL STOP
17	SEE TABLE	ADJUSTABLE ARM				67	5316500	BOOSTER RELAY* (1 27 PS)
13	SEE TABLE	PAN HD MACH SRG AS REQD	41		BELLOWS AND VANE MECHAN SM ASSY (NCL TEMS 42 THRU 63 (3 27 PS	68	5316500 2	BOOSTER RELAY* 3 5 PS
14	NO 2	REG SPR NG LKWASH AS REQD		68813 1		69	681654	MECHAN SM SUPPORT BRAC*ET
15	668837 1	L NK ASSY	42	SEE NOTE A	CODE LABEL	70	0 3 2 X3 8	PAN HD MACH SCR SEE NOTE B
16	66969 1	LOCAT NG SCREW	43	197 20 3	ELAST C STOP NOT	71		WARN NG TAG SEE NOTE B
7	6 32X5 6	F LL HD STN STL MACH SCR	44	4-40X1 4	HEX HD STN STL CAP SCR	72	19934 32	SPACER SEE NOTE B
18	681 23	PO NTER MECH ASSY NCLUDES TEMS 19 THRU 2	45	68805 1	SUPPORT BRAC KET	73	68 022	COVER PLATE
19	4 40X5 8	PAN HD MACH SCR AS REQD	46	68824 1	TAPPED PADS 3 REQD	74	8 32 X5 6	PAN HD MACH SCR AS REQD
20	4-40X1/4	PAN HD MACH SCR AS REQD	47	3 48X 4	PAN HD STN STL SEMS EXT AS REQD	75	SEE TABLE	SHHPRF LKWASH AS REQD
21	NO 4	SPR NG LKWASH AS REQD	48	68820	BELLOWS BEAM H NGE	76	8 32	HEX NUT AS REQD
27	SEE TABLE	PAN HD STN STL SEMS EXT AS REQD	49	8 32	STN STL HEX NUT AS REQD	77	19981 6	PLUG BUTTON
23	68842 1	L NK 2 REQD	50	1608 00	STN STL SHHPF LKWASH AS REQD	78	68806 3	HOUS NG
24	68822 1	ADJUSTABLE ARM 2 REQD	51	681870 1	SPR NG ASSY 3 27 PS	79	66969 8	GASKET
25	68825	SPEC AL NUT	52	4-40X5/16	PAN HD STN STL SEMS EXT AS REQD	80	19723 1	HOSE CLAMP
26	68507 1	WASHER 4 REQD	53	68796 1	BELLOWS AND P P NG ASSY	8	19734 1	WASHER 4 REQD
27	49126	SCREW 4 REQD				82	6 32 x 3 8	PAN HD SEMS EXT AS REQD
28	68931 2	SCALE	54	6 32	STN STL HEX NUT			
29	SEE TABLE	PAN HD SEMS NT AS REQD	55	606 00	STN STL SHHPRF LKWASH			

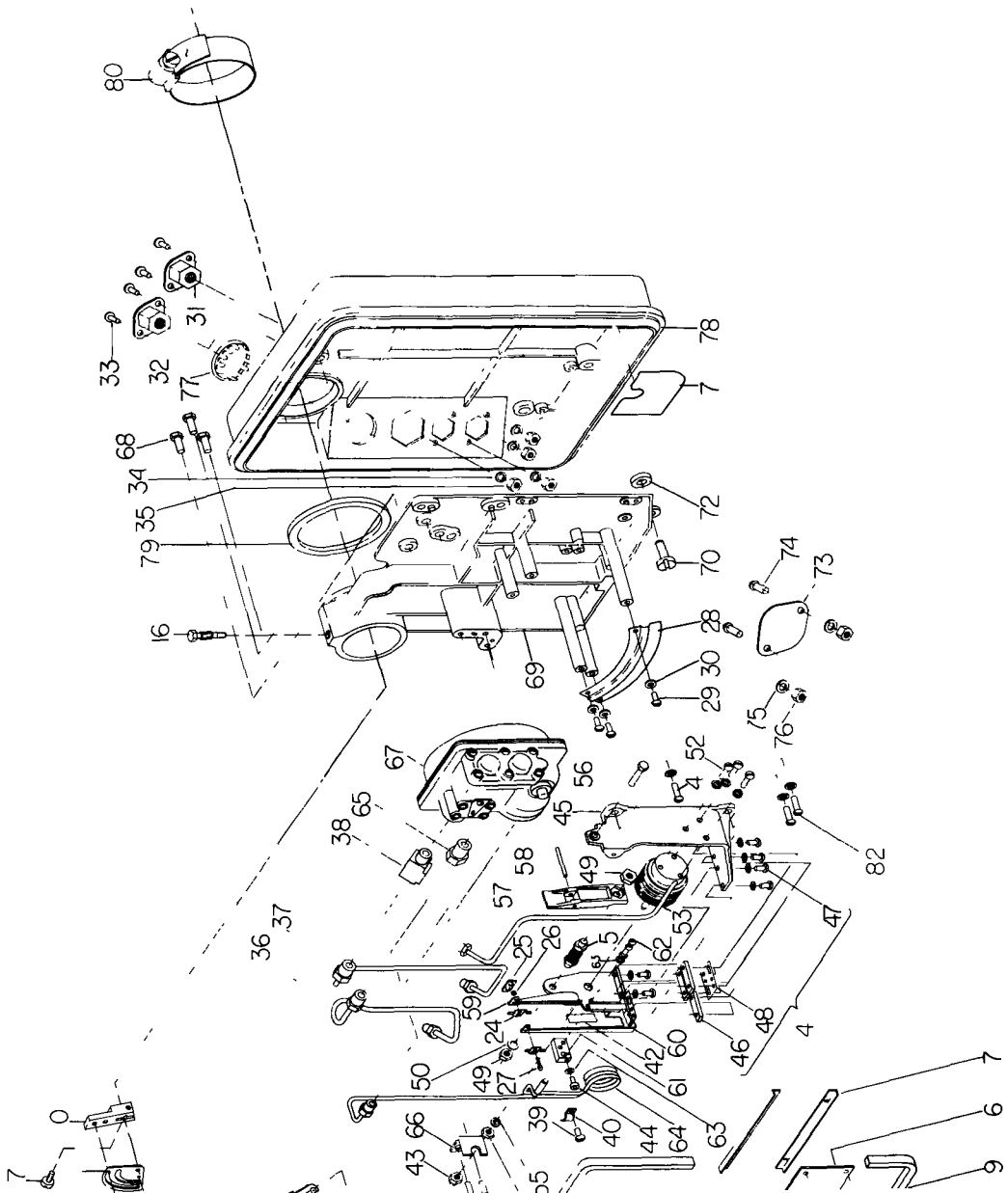
NOTE A SPEC YF NUMBER ON CODE LABEL WHEN ORDER NG PARTS
NOTE B USED FOR SH PR NG ONLY
* SEE PARTS DWG P22 37 FOR BOOSTER RELAY DETA LS

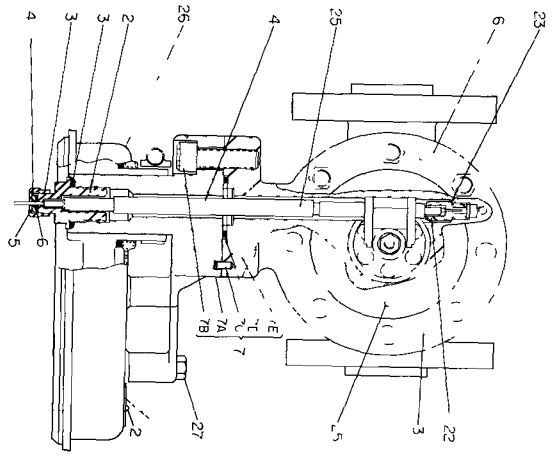
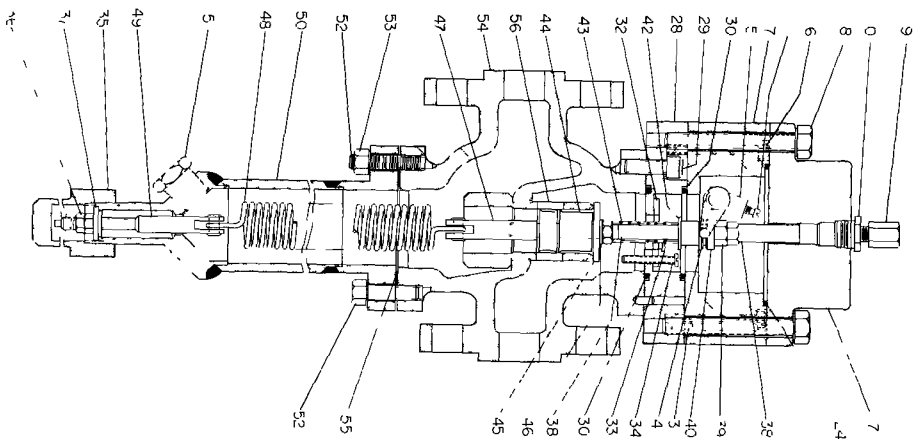
TABLE A

STYLE	TRANSM TTER ASSEMBLY	TEM 10	TEM 11	TEM 12	TEM 13	TEM 22	TEM 29
ALL EXCEPT FS87 FS87	681120 681773	631116 1 631772 1	68 117 1 681771 1	681118 1 68 774 1	2 56x3 6 2 56x1 8	6 32x5/8 6 32x1/2	3 48x5/ 6 3 48x1 4

TABLE A Cont1

ITEM 30	TEM 34	ITEM 75	ITEM 82
1 603 00 NO 3	606 00 1106 00	708 00 1208 00	6 32 x 7/16 6 32 x 3/8





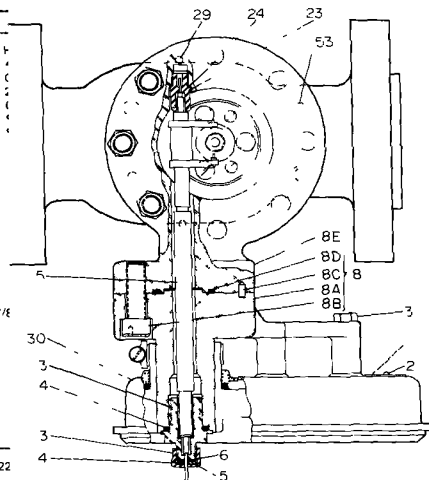
ITEM	PART NO	NAME
2	03 6	NAMEPLATE
3	41036	PAN HD THD FPMG SCR
4	31 684 1	TYPE U AS RECD
5	31 684 1	PRESS T GHT BRG CAP
6	31 684 1	FOLLOWER & WASHER
7	31 684 1	ASSY FOLLOWER
8	31 684 1	P I B FOLLOWER
9	882202 1	P I B WASHER
10	2 16 14 X 3 1/4	HEX HD CAP SCR
11	198025	DRS RECD
12	96467 5	DA IN VALVE ASSY
13	311 02	REDUCER BUSH NG
14	681881 1	FORGED LEVER SCR
15	198875 9	PRESS T GHT BRG BODY
16	681325 2	Q R NG
17	681330 1	DR VALVE ASSY
18	4 20 X 2 1 4	DR VALV MACH SCR AS
19	681424	HOUS NG & ADAPTER
20	681328 1	PLATE ASSY INCL
21	1 713 1 1/2	ADAPTER PLATE
22	1 713 1 1/2	HEX HD CAP CR 4
23	17C	RECD
24	3 16 X 3 8	GRDOV P N TYPE 4
25	17D	RECD
26	198825 3	O H NG

NOTE FOR DELTA LS OF PNEUMATIC TRANSM. TT
 FOR DELTA LS OF ELECTR. C. TRANSM. TT
 MODELS K, P, S & T SEE PARTS DVC
 MODELS VA & V8 SEE PARTS DMC

STYLE	PRESSURE	VALV	TH
FA30	250 PS	66	66
FA30	500 PS	66	66
FA7	750 PS	66	66
FA2	800 PS	66	66
FA27	250 PS	66	66
FA27	500 PS	66	66
FA42	750 PS	66	66
FA42	800 PS	66	66
FA47	800 PS	66	66

Type JR13 Area Meter

ITEM	PART NO	NAME	ITEM	PART NO
1		NAMEPLATE	18B	1/2 13x1 1/2
2	0 3/16	THD FRMG SCR TYFE U AS REQD	18C	3/16x3/8
3	41026	PRESS T GHT BRG CAP	18D	196825 3
4	311689 1	FOLLOWER & WASHER ASSY	18E	681372 1
5	311607 1	P T B FOLLOWER	23	341784 1
6	311651 1	P T B WASHER	24	316089 1
7	683203 1	COVER	24	316089 2
8	7/16 14x3 1/4	HEX HD CAP SCR	25	196826 6
		8 REQD FOR 250 PS	26	681373 1
	7/16 14x4	M LLED STUD 8 RE JD FOR 600 PS	27	197218 2
9	7/16 14	HEAVY HEX FULL NUT 16 REQD FOR 600 PS	28	10 32x1/4
10	196D25	DRAIN VALVE ASSY	29	3/16x3 8
11	195467 6	REDUCER BUSH NG	30	681120
12	311102 1	FORKED LEVER SCR	31	5/16 18x1 7/8
13	681881 1	PRESS T GHT BRG BODY	32	662956 1
14	195825 2	O R NG	33	5/16 24
15	681326 2	PRESS T GHT BRG SP NDLE ASSY	34	662955 1
16	681330 1	DR VER LEVER ASSY	35	683235
17	1/4 20x2 1/4	F L HD MACH SCR AS REQD		
18	681361 1	HOUS NG & ADAPTER TMS 18A THRU 8E) TMS 16 THRU 20)		
18A	681328 1	ADAPTER PLATE		



NOTE FOR DETAILS OF PNEUMATIC TRANSMITTER SEE PDS DWG P22
FOR DETAILS OF ELECTRIC TRANSMITTER
MODELS K P S & T SEE PDS DWG E22 63
MODELS VA & VB SEE PDS DWG E22 5

FIGURE 26 Parts Drawing P22-42 2 Inch
JR13 Area Meter (250 and 600 PSI)

ITEM	PART NO	NAME	TEM	PART NO	NAME	TEM	PART NO	NAME
1		NAMEPLATE	16C	3 16 x 3 8	GROOV P N TYPE 4	37	681323 1	UPPER BEAR NG
2	0 3 16	PAN HD THD FRMG SCR TYPE U AS REQD			2 REQD	38	682405 1	LOWER BEAR NG
3	41D26	PRESS T GHT BRG CAP	6D	195825 3	O R NG	39	68 317 1	WASHER
4	31 669 1	FOLLOWER & WASHER ASSY NCL TEMS 5 & 6	16E	681704	SP NDLE HOUS NG NCL TEM 2	40	681319 1	SPR NG
5	311607 1	P T B FOLLOWER	21	97283 1	FULL THREADED STUD 8 REQD	41	664117	METER NG PLUG
6	311651 1	P T B WASHER	22	341784 1	SP NDLE BEAR NG		6619526 1	ALL EXCEPT FS87 FS87 ONLY
7	68137 1	COVER	23	316089 1	005 SH M AS REQD	42	720 00	STN STL SHM PRF LKWASH
8	1/2 3	SEM F N SHED HEAVY HEX NUT AS REQD	24	195825 6	O R NG	43	682409 3	SPR NG HANGER & P N ASSY
9	196025	1 8 N DRA N VALVE FORKED LEVER SCR	25	195825 5	O R NG	44	664 54 1	LOAD NG SPR NG
10	311102 1 315686 1	ALL EXCEPT FS87 FS87 ONLY	26	681318 1	LOCKPLATE	45	664173	ADJ SCR & P N ASSY
11	681881 1	PRESS T GHT BRG BODY	27	10 32 x 1 4	PAN HD STN STL MACH SCR AS REQD	46	3/4 10	SEM F N SHED HEAVY HEX FULL NUT 6 REQD
12	195825 2	O R NG	28	197218 1	F L HD STN STL MACH SCR 3 REQD	47	664150 1	HOUS NG ASSY NCL TFM 48
13	68 325 1	PRESS T GHT BRG SP NDLE ASSY	29	3/16 x 3/8	GROOV P N TYPE 4 2 REQD	48	195148 5	P PE PLUG
14	681330 1 681768 1	DR VE LEVER ASSY FS87 ONLY	30	681120 681773	TRANS SEE NOTE ALL EXCEPT FS87 FS87 ONLY	49	681334 1	VALVE BODY NCL TEMS 50 51 & 52
15	3 4 10	SEM F N SHED HEAVY HEX NUT 8 REQD	3	5/16 18x1 7/8	HEX HD CAP SCR	50	3/4 10 x 3 1 4	FULL THREADED STUD 6 REQD
16	681360	HOUS NG & ADAPTER PLATE ASSY (NCL TEMS 16A THRU 6E	32	662478	SEAL NG CAP	5	3/4 10x5	FULL THREADED STUD 2 REQD
16A	68 328 1	ADAPTER PLATE	33	5/16 24	SEM F N SHED REG HEX FULL NUT AS REQD	52	3 4 10 - 3 1/2	FULL THREADED STUD 8 REQD
16B	1/2 3 x 1 1 2	HEX HD CAP SCR AS REQD	34	662955 1	WASHER	53	664174 1	FLANGE GASKET
			35	681378 2	METER NG PLUG STEM	54	SEE TABLE A	VALVE CAGE
				682970 1	ALL EXCEPT FS87 FS87 ONLY	55	1/4 x 1/2	GROOV P N TYPE 4 2 REQD
			36	197214 3	LOCK NUT			

NOTE FOR DETAILS OF PNEUMATIC TRANSMITTER SEE PTD DWG P22 39 or P22 40

STYLE	TEM 54	USE	STROKE
FS46	664118 1	4 PORTS	
FS86	664208 1	8 PORTS	1/2 N
FS87	667399 1	8 PORTS	3/4 N

TEM	QTY	PT NO	NAME
5	1	311607 1	P T B FOLLOWER
6	2	31 65 1	P T B WASHER
2	1	195875 2	O R NG
19	1	195825 3	O R NG
24	1	195825 6	O R NG
25	1	195825 5	O R NG
53	1	664174 1	FLANGE GASKET

FIGURE 77 Parts Drawing P22-44. 4 Inch JR13 Area Meter (600 PSI)

Type JR13 Area Meter

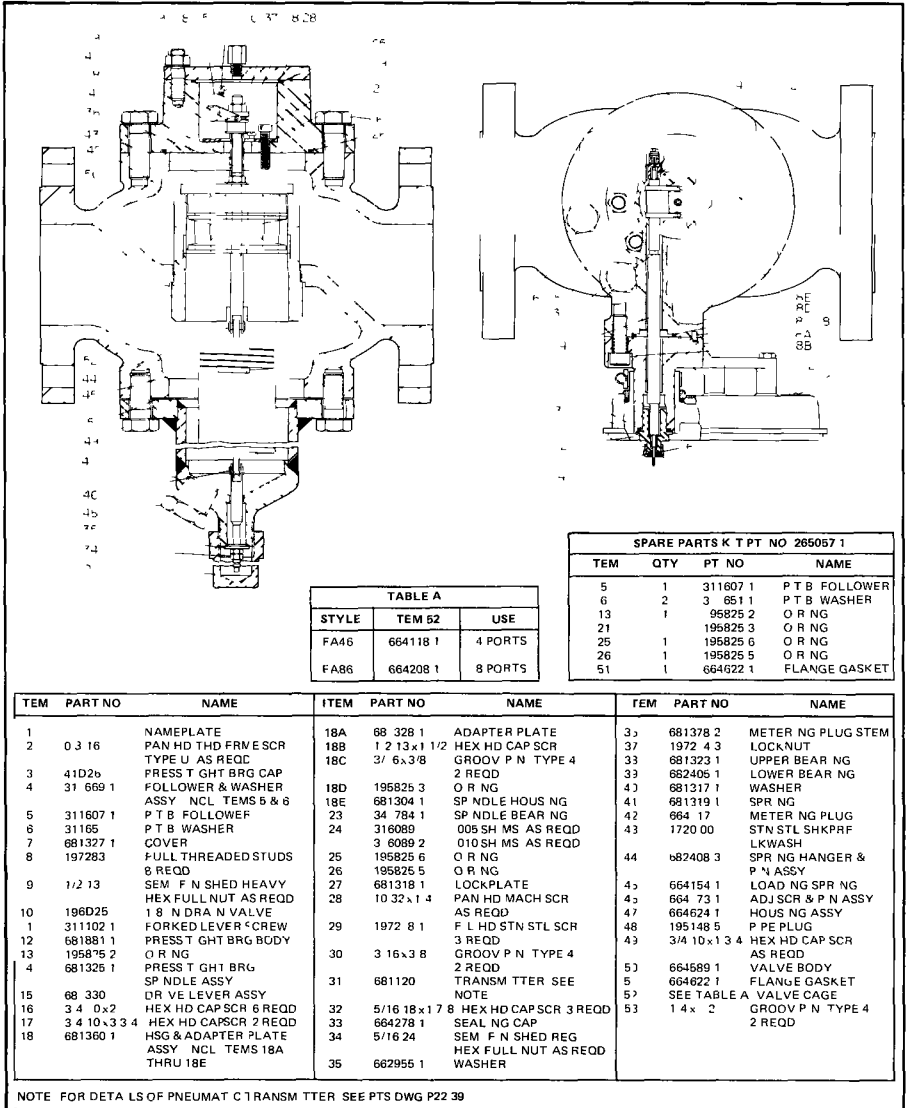
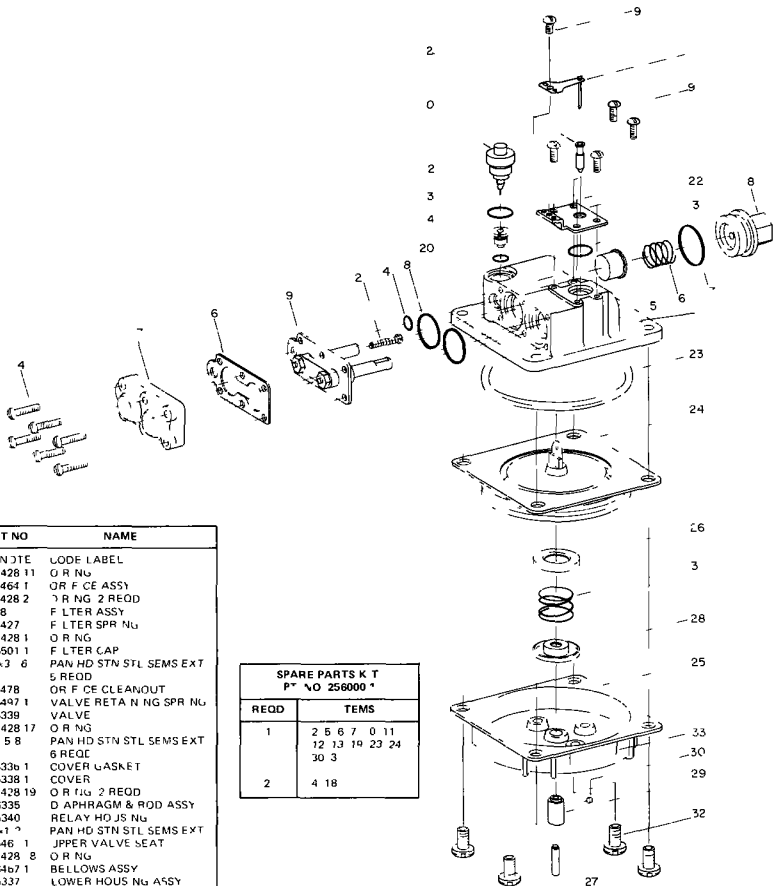


FIGURE 28 Parts Drawing P22-43, 4 Inch JR13 Area Meter (250 PSI)



TEM	PART NO	NAME
1	SEE NOTE	LODE LABEL
2	5311428 11	O R NG
3	5316464 1	OR F CE ASSY
4	5311428 2	O R NG 2 REOD
5	68368	F LTER ASSY
6	5311427	F LTER SPR NG
7	53 1428 1	O R NG
8	5316501 1	F LTER CAP
9	3 48 3 6	PAN HD STN STL SEMS EXT 5 REOD
10	53 6478	OR F CE CLEANOUT
	5316497 1	VALVE RETA N NG SPR NG
11	53 6339	VALVE
12	5311428 17	O R NG
13	6 3 5 8	PAN HD STN STL SEMS EXT
14	6 RECC	6 RECC
15	53 6336 1	COVER GASKET
16	5316338 1	COVER
17	5311428 19	O R NG 2 REOD
18	53 6335	O APHRAGM & ROD ASSY
19	53 6340	RELAY HO JS NG
20	4 40 1 7	PAN HD STN STL SEMS EXT
21	53 646 1	UPPER VALVE SEAT
22	5311428 8	O R NG
23	5316467 1	BELLOWS ASSY
24	5 116 337	LOWER HOUS NG ASSY
25	5316491 1	BELL WS STOP PLATE
26	53 6486	STOP SLREW
27	5316490	SPR NG ST JP
28	5316497	ADJ SCREW
29	53 6488	F L LCN T SERT
30	53 6492 1	SPR NG
31	4 20 7 16	PAN HD STN STL SEMS EXT
32	4 REOD	4 REOD
33	196 086	PT NG LABEL 3 27 PS BOOSTER UN T 53 6500
	96 086 2	PT NO LABEL 5 PS BOOSTER UN T 53 6500 2

SPARE PARTS KIT P* NO 256000 *	
REOD	TEMS
1	2 5 6 7 0 11 12 13 14 23 24 30 3
2	4 18

NOTE WHEN ORDER NG PARTS
SPEC FY NLMBER ON
LODE LABEL TEM

FIGURE 29 Parts Drawing P22 37 Booster Unit Pt No 5316500 □

Product Warranty

Bailey Meter Company warrants the products manufactured by it to be free from defects in material and workmanship and will repair or replace, at its option, free of charge, f o b its factory such part or parts which prove defective within one year from date of shipment. In respect to any products which are not an integral part of a product manufactured by the Company, the warranty given by the manufacturer thereof shall apply.

Shipping Damage

We strongly recommend that you inspect and test your instrument as soon as you receive it. If the instrument is damaged or operates improperly, notify the carrier for inspection of the shipment. The carrier's claim agent will prepare a report of damage, a copy of which should be forwarded to your nearest Bailey District Office (see back cover for location). The District Office will then tell you how to have the instrument repaired or replaced.

Service

The Bailey Meter Company is v tally concerned that your Bailey instrument provides continued, fine performance. This instruction manual is designed to fully describe the correct installation, operation, and maintenance of your instrument under recommended conditions. If the need arises, factory trained Service Engineers are on call for prompt, in-plant maintenance. Telephone or wire your nearby Bailey District Office to make arrangements for this service.

Replacement Parts and Supplies

Complete parts drawings and recommended spare parts kit information are included in this instruction manual. When replacement parts or supplies are required for maintenance of your Bailey instrument, contact your nearest Bailey District Office (see back cover for location). Always specify complete data on the instrument nameplate on your inquiry or order for parts. Common parts are available for shipment within 48 hours on a speed-order basis.

**BAILEY METER COMPANY
HEADQUARTERS
Wick rffe, Oh o 44092**

U S A SALES OFF CES

Ca forn a Los Ange es
Ca forn e San Franc sco
Co orado De ver
Connect cut, New Have r
F or da Jacksonv e
Geo ga At anta
 to s Ch cago
Ke ntucky Lou sv e
Lou s ana New Or eans
Ma ne Augusta
Mary and, Ba t more
Massachusetts Boston
M ch gan Detro t
M ch gan Ka amazoo
M nnesota St Pau
M ssour Kansas C ty
M ssour St Lou s
No th Caro na, Char otte
New Jersey East Orange
New York Buffa o
New York Syracuse
Oh o C nc nrat
Oh o C eve and
Pennsy van a Ph ade ph a
Pennsy van a P ttsburgh
Texas Da as
Texas Houston
Virg na R chmo rd
Wash naton Seatt e
W scons n M waukee

**BA LEY METER COMPANY L M TED
PO NTE CLA RE 730 QUEBEC**

A berta Edmonton
Br t sh Co umb a Vancouve
Man toba W nn peg
Nova Scot a Ha fax
Ontar o Ottawa
Ontar o Toronto
Quebec Montrea

**BA LEY METER AUSTRAL A PTY LTD
REGENTS PARK N S W 2143**

N S W Sydney
Queens and, Br swar e
South Austr a Ade a de
V ctor a, Me bourne
Western Austr a, Perth

**BA LEY JAPAN COMPANY LTD
511 1 BARAK N RAYAMA CHO, TACATA GUN
SH ZUOKA KEN JAPAN**

INTERNAT ONAL REPRESENTAT VES

Argent na Buenos A res
Braz R o de Jane ro
Ch e Sant ago
Eng and, Croydon
France Par s
nd a New De h
ta y M an
Japan Tokyo
Mex co, Mex co C ty D F
Puerto R co San Juan
Spa n Madr d
Ta wan Ta pe
Turkey, Ankara
And Other Pr nc pa C tes

Bailey

a subs d ary of Babcock & W cox U S A