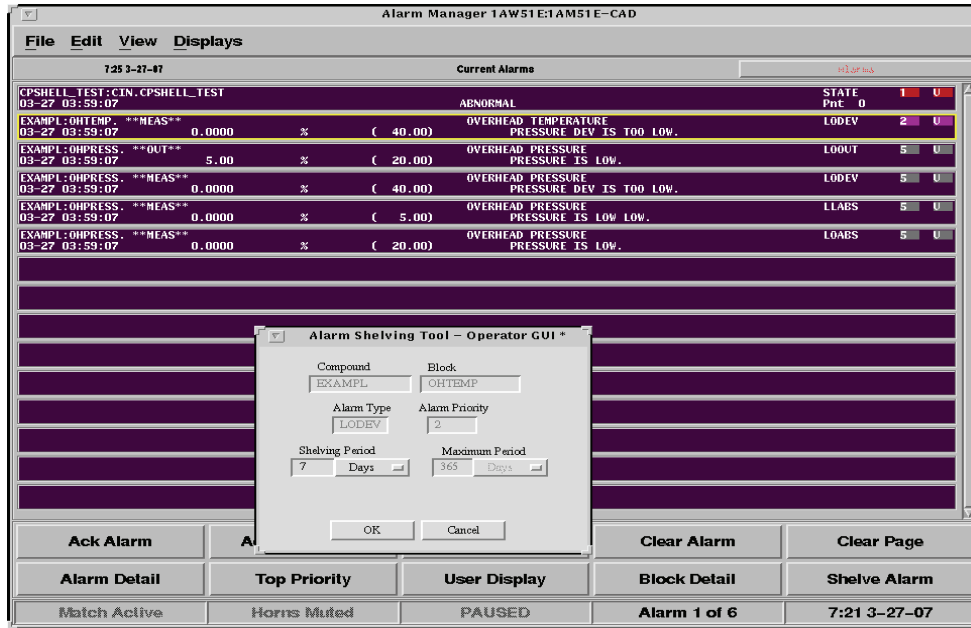


# I/A Series® Software

PSS 21S-2B12 B4

## Alarm Shelving Tool



### OVERVIEW

The Alarm Shelving Tool product permits the operator to select an alarm from the I/A Series® Current Alarm Display (CAD) and request that it be shelved (inhibited) for a fixed period of time after which normal operation is restored. Alarm shelving information is maintained in a special collection of I/A Series control blocks called an Alarm Shelf.

The ability to shelve an alarm is controlled through the definition and enforcement of shelving roles and rules. There are three shelving roles: Operator, Supervisor, and Engineer. Each shelving role is assigned an I/A Series access level and shelving rules are defined for each role. Shelving rules can be inclusionary, exclusionary or both.

The ability to shelve an alarm is controlled by the

display manager environment access protection class mechanism based on the shelving role.

While InFusion™ View and the InFusion Alarm Provider clients are not supported, other InFusion components are compatible with the Alarm Shelving Tool product.

### PRODUCT FEATURES

The Alarm Shelving Tool product is based on a client/server architecture and supports the concept of an AST domain. An AST domain is the set of stations (AWs, WPs and control stations) maintained by a single AST Server.

The Alarm Shelving Tool product consists of configuration tools, displays, and Alarm Shelves which facilitate real time alarm shelving.

### AST Configurator

The Engineer Role can use the AST configurator to configure and deploy the AST domain.

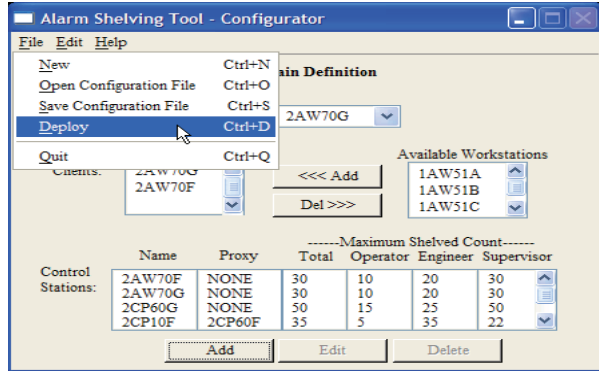


Figure 1. AST Configurator

### Summary Statistics Display

Available from any AST Client, the Summary Statistics Display shows critical statistics for any Alarm Shelf and any Role.

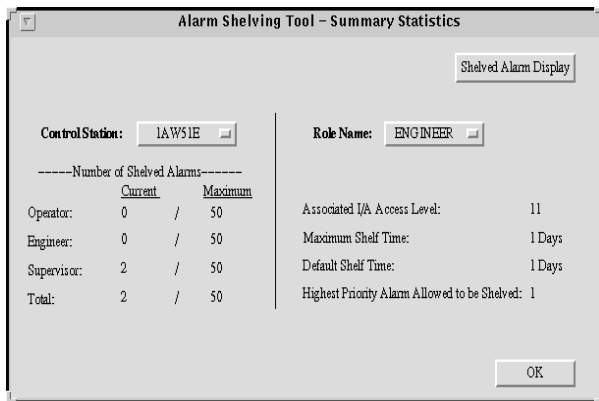


Figure 2. Summary Statistics Display

### Shelved Alarm Display

The Shelved Alarm Display, when invoked from the Displays menu of the CAD, shows the list of currently shelved alarms. Once the shelving period for an alarm expires, the alarm is automatically unshelved.

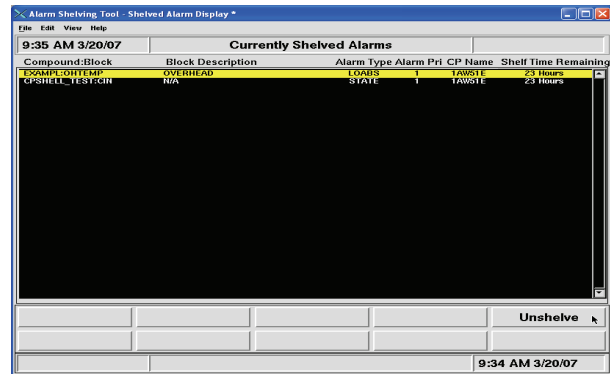


Figure 3. Shelved Alarm Display

### Operator GUI

The Operator GUI facilitates the shelving of an alarm selected from the CAD. Permission to shelve is granted based on the role of the user and the rules and limits configured for that role. Information related to the shelving request is then stored in the selected alarm's corresponding Alarm Shelf.

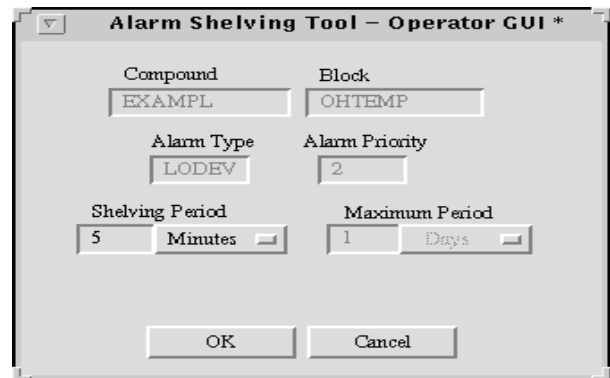


Figure 4. Operator GUI

### Alarm Shelf

The Alarm Shelf is a collection of I/A Series control blocks in which alarm shelving information is stored. Each control station has its own Alarm Shelf - generally, the shelf is in the control station itself, but a proxy control station can be defined. The Alarm Shelf consists of:

- ▶ 1 compound
- ▶ 1 sequence block
- ▶ 2 CALC blocks
- ▶ X \* 5 data blocks (4 STRING and 1 REAL) where X is the number of alarms that the customer wants to shelve in the target control station.

For control stations that are under ICC control, the Alarm Shelf is built automatically during deployment. For control stations that are under IACC/IEE control, the Alarm Shelf has to be built manually.

If the target control station does not support these block types or if the Alarm Shelf does not fit, the Alarm Shelf must be placed in a control station that does support these block types and has sufficient space.

### REQUIREMENTS

- ▶ A control station that supports block types required for the Alarm Shelf and that has enough space to hold the Alarm Shelf.
- ▶ Any Y2K compliant I/A Series workstation not running a Windows NT® operating system.

### ORDERING INFORMATION

- ▶ Q0303AB - Alarm Shelving Tool Config. 1  
1 Host and 5 CSs
- ▶ Q0303AC - Alarm Shelving Tool Config. 2  
1 Host and 15 CSs
- ▶ Q0303AD - Alarm Shelving Tool Config. 3  
1 Host and 25 CSs



33 Commercial Street  
Foxboro, MA 02035-2099  
United States of America  
[www.foxboro.com](http://www.foxboro.com)  
Inside U.S.: 1-866-746-6477  
Outside U.S.: 1-508-549-2424  
or contact your local Foxboro  
representative.  
Facsimile: 1-508-549-4999

Invensys, Foxboro, InFusion, and I/A Series are trademarks of  
Invensys plc, its subsidiaries, and affiliates.  
All other brand names may be trademarks of their respective owners.

Copyright 2007 Invensys Systems, Inc.  
All rights reserved

MB 21A

Printed in U.S.A.

0607