

FSC Safety Manager Configuration Forms

for use with the Honeywell FSC System

Release 400

FS88-500

**Implementation
FSC Safety Manager**

***FSC Safety Manager
Configuration Forms***

for use with the Honeywell FSC System

Release 400

FS88-500

09/96

Copyright, Notices, and Trademarks

© Copyright 1996 by Honeywell Inc.

Revision 05 – September 24, 1996

While this information is presented in good faith and believed to be accurate, Honeywell disclaims the implied warranties of merchantability and fitness for a particular purpose and makes no express warranties except as may be stated in its written agreement with and for its customer.

In no event is Honeywell liable to anyone for any indirect, special or consequential damages. The information and specifications in this document are subject to change without notice.

TotalPlant, TDC 3000 and Universal Control Network are U.S. registered trademarks of Honeywell Inc.

FSC is a registered trademark of Honeywell Safety Management Systems.

Other brand or product names are trademarks of their respective owners.

Honeywell
Industrial Automation and Control
Automation College
2820 West Kelton Lane
Phoenix, AZ 85023

(602) 313-5669

About This Publication

This publication provides the configuration forms for the FSC Safety Manager in the TotalPlant Solution (TPS) network Release 510 for the Honeywell FSC system Release 400. These forms should be used to assist you in configuring the FSC-SMM data points at the Universal Station.

The user should be familiar with the FSC Safety Manager system control functions described in *FSC Safety Manager Control Functions for use with the Honeywell FSC System - Release 400* and the *Implementation/Startup & Reconfiguration - 2* binder (LCN) bookset before using this publication.

All references in this manual to “FSC Safety Manager” or “FSC Safety Manager Module” pertain only for use with the Honeywell FSC system.

Table of Contents

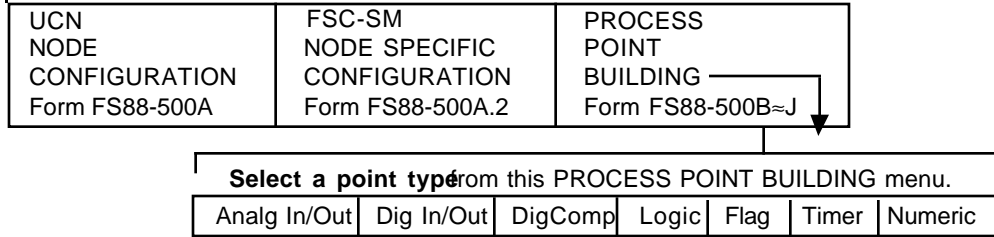
FSC SAFETY MANAGER FORMS

<u>Form Name</u>	<u>Form ID</u>
FSC-SM UCN Node Configuration	FS88-501A
FSC-SM Node Specific Configuration	FS88-501B
FSC-SM Analog Input Data Point	FS88-502
FSC-SM Analog Output Data Point	FS88-503
FSC-SM Digital Composite Data Point	FS88-504
FSC-SM Digital Input Data Point	FS88-505
FSC-SM Digital Output Data Point	FS88-506
FSC-SM Logic Data Point	FS88-507
FSC-SM Flag Point	FS88-508
FSC-SM Timer Point	FS88-509
FSC-SM Numeric Point	FS88-510

FSC Safety Manager Form Instructions, continued

ENTERING DATA FROM THE FORMS INTO THE SYSTEM

Select the **NETWORK INTERFACE MODULE** target from the Engineering Main Menu to get the NIM BUILD TYPE SELECT MENU.



FSC-SM UCN Node Configuration

FSC-SM UCN Node Configuration	Engineer:	Date:
-------------------------------	-----------	-------

UCN Node Configuration Display

NOTE

This form is intended primarily for use in configuring each FSC-SM on your system by selecting **SM** for **NODETYP** below. This same form can be used to configure each NIM on your system by selecting **NIM** for **NODETYP** (some different targets will appear as shown). If your system has other UCN devices (PM, APM, HPM, LM), the NIMs can also be configured using the forms contained in the documentation for those devices.

NTWKNUM NIM's UCN that SM is connected to (Process Network Number)	_ . _	<i>range = 1 to 20</i> <i>default = Not applicable</i>
NODENUM SMM's or NIM's Address on the UCN	_ . _	<i>range = 1 to 64</i> <i>default = Not applicable</i>
NODETYP Type of Node on the UCN	NotConfig Nim PM APM HPM LM SM	This NIM or SM not configured on UCN Network Interface Module Process Manager Module Advanced Process Manager Module High Performance Process Manager Module Logic Manager Module Safety Manager Module
<i>Applicable only if NODETYP = SM</i>		
SMPLTFM Type of Safety Control Platform	FSC TRICON	Safety Manager is using FSC Controller Safety Manager is using TRICON Controller
NODEASSN	ThisNim RemotNim	NIM assigned to report alarms and perform checkpointing for network specified in NTWKNUM Additional NIM on a network that already has "ThisNIM" defined
<i>Applicable only if NODETYP = Nim</i>		
LOADSCOP Load Scope	NimOnly NimAndPm	Configured data goes to the NIM only Configured data goes to NIM and SM
NMSGTXT Number of Message Text Items	_ . _	<i>range = 0 to 15</i> <i>default = 0</i>

DIGITAL COMPOSITE PV STATE TEXT

MOVPTXT Moving Text	Moving	Individual point configuration specifies which input state is associated with this moving text. If NODENUM is even, this parameter is hidden.
-------------------------------	--------	---

FSC-SM UCN Node Configuration

UCN Node Configuration Display (Continued)

BADPVTXT
Bad Text

Bad

Individual point configuration specifies which input state is associated with the bad text. If NODENUM is even, this parameter is hidden.

FSC-SM UCN Node Configuration

FSC-SM UCN Node Configuration	Engineer:	Date:
-------------------------------	-----------	-------

Status Message Text Configuration Display

N/A if NMSGTXT = 0

MSGTXT(1) Status Message Text #1	_ _ _ _ _ _ _	<i>range = Eight Character String default = Blank</i>
MSGTXT(2) Status Message Text #2	_ _ _ _ _ _ _	<i>range = Eight Character String default = Blank</i>
MSGTXT(3) Status Message Text #3	_ _ _ _ _ _ _	<i>range = Eight Character String default = Blank</i>
MSGTXT(4) Status Message Text #4	_ _ _ _ _ _ _	<i>range = Eight Character String default = Blank</i>
MSGTXT(5) Status Message Text #5	_ _ _ _ _ _ _	<i>range = Eight Character String default = Blank</i>
MSGTXT(6) Status Message Text #6	_ _ _ _ _ _ _	<i>range = Eight Character String default = Blank</i>
MSGTXT(7) Status Message Text #7	_ _ _ _ _ _ _	<i>range = Eight Character String default = Blank</i>
MSGTXT(8) Status Message Text #8	_ _ _ _ _ _ _	<i>range = Eight Character String default = Blank</i>
MSGTXT(9) Status Message Text #9	_ _ _ _ _ _ _	<i>range = Eight Character String default = Blank</i>
MSGTXT(10) Status Message Text #10	_ _ _ _ _ _ _	<i>range = Eight Character String default = Blank</i>
MSGTXT(11) Status Message Text #11	_ _ _ _ _ _ _	<i>range = Eight Character String default = Blank</i>
MSGTXT(12) Status Message Text #12	_ _ _ _ _ _ _	<i>range = Eight Character String default = Blank</i>
MSGTXT(13) Status Message Text #13	_ _ _ _ _ _ _	<i>range = Eight Character String default = Blank</i>
MSGTXT(14) Status Message Text #14	_ _ _ _ _ _ _	<i>range = Eight Character String default = Blank</i>
MSGTXT(15) Status Message Text #15	_ _ _ _ _ _ _	<i>range = Eight Character String default = Blank</i>

FSC-SM Node Specific Configuration

FSC-SM Configuration	Engineer:	Date:
-----------------------------	------------------	--------------

WARNING: If the point mix or the scan rate is changed, then the node's full database will be set to its default.

SM Node Configuration Display

NTWKNUM | | | range = 1 to 20
NIM's UCN that SMM is connected to | default = Not applicable

NODENUM | | | range = 1 to 64
SMM's Address on the UCN | default = Not applicable

NODETYPE Enumeration of the UCN Node Type

PM	Process Manager Module
APM	Advanced Process Manager Module
HPM	High Performance Process Manager Module
LM	Logic Manager Module
SM	Safety Manager Module

Applicable only if NODETYPE = SM

SMPLTFM Type of Safety Control Platform	FSC TRICON	Safety Manager is using FSC Controller Safety Manager is using TRICON Controller
---	----------------------	---

NAISLOT* | | | | | range = 0 to 1000
of Analog Input Slots | default = 0

NAOSLOT* | | | | | range = 0 to 1000
of Analog Output Slots | default = 0

NDISLOT* | | | | | range = 0 to 2000
of Digital Input Slots | default = 0

NDOSLOT* | | | | | range = 0 to 2000
of Digital Output Slots | default = 0

NLOGSLOT* | | | | | range = 0 to 30
of Logic Slots | default = 0

NDCSLOT* | | | | | range = 0 to 1000
of Digital Composite Slots

NONETXT | | | | | | | | | range = Not applicable
Digital Composite None State | default = None

NNUMERIC** | | | | | range = 0 to 1000
of Numerics | default = 0

* The actual Range check will be calculated on the PU count for each Point type and the mix of configured Points desired. The FSC-SMM will perform Range checking. The 0.5 second scan rates will tend to lower these maximum range values.

** The actual Range check for this Parameter will depend on the NNLSBA. The FSC-SMM will perform Range checking.

FSC-SM Node Specific Configuration

SM Node Configuration Display (continued)

NNLSBA*** FSC-SM Start Address of the Numeric Array	_ _ _ _ _ _ _	range = 0 to 65535 default = 0 (Not Configured)
---	---------------	--

NFLAG |_|_|_|_|_|_|_| range = 0 to 2000
of Flags default = 0
The Range check for this Parameter will be dependent on the FLLSBA. SMM will perform Range checking.

FLLSBA FSC-SM Start Address of the Flag Array	_ _ _ _ _ _ _	range = 0 to 65535 default = 0 (Not Configured)
---	---------------	--

The Range check for this Parameter will be dependent on the NFLAG value. SMM will perform Range checking.

NTIMER |_|_|_|_|_|_|_| range = 0 to 1500
of Timers default = 0
The actual Range check will be calculated on the PU count for each Point type and the mix of configured Points desired. The 0.5 second scan rates will tend to lower the maximum range value. SMM will perform Range checking.

SCANRATE |_| range: 0 = Null
SMM's Scan Rate in Times per Second 1 = AR1DT2
2 = AR2DT2
3 = AR1DT1
default = AR2DT2

*****The Range check for this Parameter will be dependent on NNUMERIC value. The FSC-SMM will perform Range checking.**

FSC-SM Analog Input Data Point

FSC-SM Analog In Data Point	Engineer:	Date:
-----------------------------	-----------	-------

Point Assignment Display

NAME *range = Not applicable*
Tag Name *default = Blank*

NODE TYP *range = Not applicable*
Node Type *default = PM*

PM
APM
HPM
LM
SM

Applicable if NODE TYP = SM

SMPLTFM Type of Safety Control Platform	FSC TRICON	Safety Manager is using FSC Controller Safety Manager is using TRICON Controller
---	----------------------	---

PNTFORM *Point is fully displayed and alarmed*
Point Form *Point is partially displayed but not alarmed*

Full
Componnt

PTDESC *range = Not applicable*
Point Descriptor *default = Blank*

EUDESC *range = Not applicable*
Engineering Unit Descriptor *default = Blank*

KEYWORD *range = Not applicable*
Point Keyword Descriptor *default = Blank*

ASSOCDSP *range = Alphanumeric*
Associated Display *default = Blank*

UNIT *range = Alphanumeric*
Process Unit Point is Assigned to *default = Not applicable*

NTWKNUM *range = 1 to 20*
NIM's UCN that Contains This Point *default = Not applicable*

NODENUM *range = 1 to 64*
SMM's Address on the UCN *default = Not applicable*

SLOTNUM *range = 1 to 1000*
Point Slot Number *default = Not applicable*

FSC-SM Analog Input Data Point

Point Assignment Display (continued)

PRIMMOD Primary Module Point ID	N/A if PNTFORM = Compoint range = Not applicable default = Null
---	-------	---

PLCADDR |.....| range = 0 to 65535
FSC Source Address default = 0 (Not Configured)

NIM/PV Configuration Display

PVCHAR **LINEAR**
PV Characterization SQROOT

PVRAWHI |.....| range = > PVRAWLO
PV Raw High Value default = 4095

PVRAWLO |.....| range = < PVRAWHI
PV Raw Low Value default = 0

INPTDIR **Direct** Highest energy from sensor = 100% PV
Analog Input Direction Reverse Highest energy from sensor = 0% PV

PVEUHI |.....| range = PVEULO to PVEUHI
PV High Range in EUs default = 100.0

PVEULO |.....| range = PVEUHI to PVEULO
PV Low Range in EUs default = 0.0

PVFORMAT D0 D2 D0 = 99990 D2 = 99099
PV Decimal Point Format **D1** D3 D1 = 99909 D3 = 90999

PVEXEUHI |.....| range = ≥ PVEUHI
PV Range Extension High in EUs default = 102.9

PVEXEULO |.....| range = < PVEULO
PV Range Extension Low in EUs default = -2.9

PVCLAMP **NoClamp** No clamping of the PV value
PV Clamping Option Clamp Clamp PV value at range extension limit

LOCUTOFF |.....| range = PVEULO to PVEUHI and NaN
Low Signal Cutoff for Flow Inputs default = NaN

FSC-SM Analog Input Data Point

NIM/PV Configuration Display (continued)

		N/A if PNTFORM = Compoint
PVSRCOPT PV Source Option	OnlyAuto All	PV source selection is not available and field wiring or memory fetch supplies PV. Selection from PVSOURCE is available and Operator/CL-program may supply PV.

PVSOURCE PV Source	Auto Man Sub	Applies when PVSRCOPT = All. Field wiring or memory fetch supplies PV. PV is supplied by Operator or program. A value is substituted by a CL program.
------------------------------	---------------------------	---

TF |_____| *range = 0.0 to 60.0 (minutes)*
PV Filter Lag Time in Minutes *default = 0.0 (PV will not be delayed)*

		N/A if PNTFORM = Compoint
PVTV PV Target Value in EUs	_____	<i>range = PVEULO to PVEUHI, and NaN</i> <i>default = NaN</i>
OVERVAL Overview Display Value	_____	<i>range = 0 to 100</i> <i>default = 25</i>

Alarming Display

		N/A if PNTFORM = Compoint
<p>The following two example parameters represent the typical format of alarm trip points and priorities. Please refer to these as you are entering trip points and alarm priorities that follow this information. NOTE: If you do not enter a trip point value for a given pair of trip points and alarm priorities, do not circle an alarm priority option for that pair (i.e., no trip point, no alarm priority).</p>		
PVLOTP PV Low Alarm Trip Point	_____	<i>range = PVEULO to PVHITP, and NaN</i> <i>default = NaN</i>
BADPVPR BAD PV Alarm Priority	No Action Journal Low High Emergency	Alarm is not reported to the system Logged but not reported to Operator Stations Reported to Unit Alarm Summary display Reported to Area and Unit Alarm Summary Reported to all Alarm Summary displays

		N/A if PNTFORM = Compoint
PVALDB PV Alarm Deadband in %	Half (of 1%) Four	One Two Three Five EU

		N/A if PNTFORM = Compoint, Only if PVALDB = EU
PVALDBEU PV Alarm Deadband in EU	_____	<i>range = 0</i> <i>default = 1.0</i>

FSC-SM Analog Output Data Point

FSC-SM AnalogOut Data Point	Engineer:	Date:
-----------------------------	-----------	-------

Point Assignment Display

NAME *range = Not applicable*
Tag Name *default = Blank*

NODE TYP *range = Not applicable*
Node Type *default = PM*

PM
APM
HPM
LM
SM

Applicable if NODETYP = SM

SMPLTFM	FSC	<i>Safety Manager is using FSC Controller</i>
Type of Safety Control Platform	TRICON	<i>Safety Manager is using TRICON Controller</i>

PNTFORM *Point is fully displayed and alarmed*
Point Form *Point is partially displayed but not alarmed*

Full
Componnt

PTDESC *range = Not applicable*
Point Descriptor *default = Blank*

EUDESC *range = Not applicable*
Engineering Units Descriptor *default = Blank*

KEYWORD *range = Not applicable*
Keyword Descriptor *default = Blank*

ASSOCDSP *range = Alphanumeric*
Associated Display *default = Blank*

UNIT *range = Alphanumeric*
Process Unit Point is Assigned to *default = Not applicable*

NTWKNUM *range = 1 to 20*
NIM's UCN that Contains This Point *default = Not applicable*

NODENUM *range = 1 to 64*
SMM's Address on the UCN *default = Not applicable*

SLOTNUM *range = 1 to 1000*
Point Slot Number *default = Not applicable*

The actual Range check will be calculated on the PU count for each Point type and the mix of configured Points desired.

FSC-SM Analog Output Data Point

Point Assignment Display (continued)

PRIMMOD Primary Module Point ID	N/A if PNTFORM = Component range = Not applicable default = Null
---	-------	--

PLCADDR FSC Source Address	range = 0 to 65535 default = 0 (Not Configured)
--------------------------------------	-------	--

OPFINHI	range = > OPFINLO default = 4095.0
----------------	-------	---------------------------------------

OPFINLO	range = < OPFINHI default = 0.0
----------------	-------	------------------------------------

Operating Configuration Display

OPTDIR AO Direct/Reverse Action	Direct Reverse	For final OP: 100% = Highest energy to actuator For final OP: 100% = Lowest energy to actuator
---	--------------------------	---

Mode Configuration Display

RCASOPT Remote Cascade Option	None Ddc	N/A if PNTFORM = Component No cascade mode of any type is allowed In Cas, AM point controls this point's OP
NMODE Analog Output Point's Normal Mode	None Man Cas	None, Man applies when RCASOPT = None. None, Man, Cas applies when RCASOPT = Ddc. No configured "normal" operating mode. Manual is the configured "normal" mode. If RCASOPT equals Ddc, Cascade may be configured as the "normal" mode.

NMODATTR Normal Mode Attribute	None Operator Program	N/A if NMODE = None, or if PNTFORM = Component Parameter NMODE sets "normal" mode Operator sets "normal" operating mode Program sets "normal" operating mode
MODEPERM Mode Permissive	Permit NotPerm	Operator can change this point's mode Operator cannot change this point's mode

FSC-SM Digital Composite Data Point

FSC-SM DigComp Data Point	Engineer:	Date:
---------------------------	-----------	-------

Point Assignment Display

NAME *range = Not applicable*
 Tag Name |.....| *default = Blank*

NODE TYP *range = Not applicable*
 Node Type *default = PM*
 PM
 APM
 HPM
 LM
SM

Applicable if NODE TYP = SM

SMPLTFM Type of Safety Control Platform	FSC TRICON	Safety Manager is using FSC Controller Safety Manager is using TRICON Controller
---	----------------------	---

PNTFORM *Full* *Point is fully displayed and alarmed*
 Point Form *Componnt* *Point is partially displayed but not alarmed*

PTDESC *range = Not applicable*
 Point Descriptor *default = Blank*
 |.....|

EUDESC *range = Not applicable*
 Engineering Units Descriptor |.....| *default = Blank*

KEYWORD *range = Not applicable*
 Keyword Descriptor |.....| *default = Blank*

ASSOCDSP *range = Alphanumeric*
 Associated Display |.....| *default = Blank*

UNIT |..| *range = Alphanumeric*
 Process Unit Point is Assigned to *default = Not applicable*

NTWKNUM |..| *range = 1 to 20*
 NIM's UCN that Contains This Point *default = Not applicable*

NODENUM |..| *range = 1 to 64*
 SMM's Address on the UCN *default = Not applicable*

SLOTNUM |.....| *range = 1 to 1000*
 Point Slot Number *default = Not applicable*

The actual Range check will be calculated on the PU count for each Point type and the mix of configured Points desired.

N/A if PNTFORM = Componnt

PRIMMOD Primary Module Point ID 	<i>range = Not applicable</i> <i>default = Null</i>
---	--

FSC-SM Digital Composite Data Point

Point Assignment Display (continued)

NOSTATES	2	2 digital switch states can be configured
Number of Digital States	3	3 digital switch states can be configured
NODINPTS	0	0 digin connections can be configured
Number of Digital Input Connections	1	1 digin connection can be configured
	2	2 digin connections can be configured
NODOPTS	0	0 digout connections can be configured
Number of Digital Output Connections	1	1 digout connection can be configured
	2	2 digout connections can be configured
	3	3 digout connections can be configured

State Configuration Display

N/A if PNTFORM = Componnt

- (1) = First active state
- (0) = Inactive state
- (2) = Second active state

STATETXT (1)

State 1 Descriptor (1) |_____| *range = Not applicable*
default = On

STATETXT (0)

State 0 Descriptor (0) |_____| *range = Not applicable*
default = Off

STATETXT (2)

State 2 Descriptor (2) |_____| *range = Not applicable*
default = "State2"

BOXCLR (1)

State 1 Box Color Red **Green** (Middle box default) White Black
Cyan Yellow Blue Magenta

BOXCLR (0)

State 0 Box Color Red Green White Black
Cyan **Yellow** (Middle box default) Blue Magenta

BOXCLR (2)

State 2 Box Color **Red** (Lower box default) Green White Black
Cyan Yellow Blue Magenta

FSC-SM Digital Composite Data Point

State Configuration Display (continued)

N/A if NODOPTS = 0

MOMSTATE	None	No momentary output states
Momentary Output States	Mom_0	State 0 is valid if (NOSTATES = 2)
	Mom_1	State 1 is valid if (NOSTATES = 2 or 3)
	Mom_2	State 2 is valid if (NOSTATES = 3)
	Mom_1_2	State 1 or 2 is valid if (NOSTATES = 3)

N/A if PNTFORM = Componnt

LOGICSRC	
Logical Input Connection Source

DISRC(1-2)

Source addresses in FSC for the DI Source

Input

Source Point.Parameter

DISRC (1)•.....
DISRC (2)•.....

FSC-SM Digital Composite Data Point

PV/Input Configuration Display

Applies if NODINPTS = 1

D1_1 D1_One PV State	PVState1 PVState0	Use and display contents of STATETXT1 Use and display contents of STATETXT0
--------------------------------	-----------------------------	--

Applies if NODINPTS = 2

D2D1_00 D2D1 Zero_Zero PV State	PVState1 PVState0 PVState2 BadPV MovPV	Use and display contents of STATETXT1 Use and display contents of STATETXT0 Use and display contents of STATETXT2 Use and display contents of BADPVTXT Use and display contents of MOVVPTXT
D2D1_01 D2D1 Zero_One PV State	PVState1 PVState0 PVState2 BadPV MovPV	Use and display contents of STATETXT1 Use and display contents of STATETXT0 Use and display contents of STATETXT2 Use and display contents of BADPVTXT Use and display contents of MOVVPTXT
D2D1_10 D2D1 One_Zero PV State	PVState1 PVState0 PVState2 BadPV MovPV	Use and display contents of STATETXT1 Use and display contents of STATETXT0 Use and display contents of STATETXT2 Use and display contents of BADPVTXT Use and display contents of MOVVPTXT
D2D1_11 D2D1 One_One PV State	PVState1 PVState0 PVState2 MovPV BadPV	Use and display contents of STATETXT1 Use and display contents of STATETXT0 Use and display contents of STATETXT2 Use and display contents of MOVVPTXT Use and display contents of BADPVTXT

N/A if PNTFORM = Componnt, or if NODINPTS = 0

PVSRCOPT PV Source Option	OnlyAuto All	PV source selection is not available and field wiring or memory fetch supplies PV. Selection from PVSOURCE is available and Operator/CL-program may supply PV.
PVSOURCE PV Source	Auto Man Sub Track	Applies when PVSRCOPT = All. Field wiring or memory fetch supplies PV. PV is supplied by Operator or program. A value is substituted by a CL-program. PV tracks the output.

FSC-SM Digital Composite Data Point

Output Configuration Display

N/A if NODOPTS < 2

NONECONF None State Configuration	On Off
---	------------------

N/A if NODOPTS = 0

STATE 1	<u>OUTPUT 1</u>	<u>OUTPUT 2</u>	<u>OUTPUT 3</u>
ST1_OP1 (NODOPTS = 1) State 1 – Output 1	Off ON	Not applicable	Not applicable
ST1_OP2 (NODOPTS = 2) State 1 – Output 2	Off On	Off On	Not applicable
ST1_OP3 (NODOPTS = 3) State 1 – Output 3	Off On	Off On	Off On
STATE 0			
ST0_OP1 (NODOPTS = 1) State 0 – Output 1	Off On	Not applicable	Not applicable
ST0_OP2 (NODOPTS = 2) State 0 – Output 2	Off On	Off On	Not applicable
ST0_OP3 (NODOPTS = 3) State 0 – Output 3	Off On	Off On	Off On
STATE 2			
ST2_OP1 (NODOPTS = 1) State 2 – Output 1	Off On	Not applicable	Not applicable
ST2_OP2 (NODOPTS = 2) State 2 – Output 2	Off On	Off On	Not applicable
ST2_OP3 (NODOPTS = 3) State 2 – Output 3	Off On	Off On	Off On

N/A if NONECONF = OFF

NONE STATE	<u>OUTPUT 1</u>	<u>OUTPUT 2</u>	<u>OUTPUT 3</u>
NONE_OP1 (NODOPTS = 1) None State – Output 1	Off On	Not applicable	Not applicable
NONE_OP2 (NODOPTS = 2) None State – Output 2	Off On	Off On	Not applicable
NONE_OP3 (NODOPTS = 3) None State – Output 3	Off On	Off On	Off On

FSC-SM Digital Composite Data Point

Output Configuration Display (continued)

N/A if NODOPTS = 0

DODSTN

Specification if the Digital Composite Input point. The destination can be specified by TAG-PARAMETER, the destination address in FSC.

Output

Source Point.Parameter

DODSTN (1)	•
DODSTN (2)	•
DODSTN (3)	•

PISRC

PISRC (1) |.....| range = 0 to 65535
Target Addresses in FSC for Permissive Interlock Source 1 default = 0 (Not Configured)

PISRC (2) |.....| range = 0 to 65535
Target Addresses in FSC for Permissive Interlock Source 2 default = 0 (Not Configured)

PISRC (3) |.....| range = 0 to 65535
Target Addresses in FSC for Permissive Interlock Source 3 default = 0 (Not Configured)

OISRC

OISRC (1) |.....| range = 0 to 65535
Target Addresses in FSC for Override Interlock Source 1 default = 0 (Not Configured)

OISRC (2) |.....| range = 0 to 65535
Target Addresses in FSC for Override Interlock Source 2 default = 0 (Not Configured)

OISRC (3) |.....| range = 0 to 65535
Target Addresses in FSC for Override Interlock Source 3 default = 0 (Not Configured)

LMSRC

LMSRC |.....| range = 0 to 65535
Target Addresses in FSC for Local/Manual Source default = 0 (Not Configured)

FSC-SM Digital Composite Data Point

Mode Configuration Display

N/A if NODOPTS = 0

NMODATTR Normal Mode Attribute	None Operator Program	Parameter NMODE sets "normal" mode Operator sets "normal" operating mode Program sets "normal" operating mode
MODEPERM Mode Permissive	Permit NotPerm	Operator can change this point's mode attribute Operator cannot change this point's mode attribute
OROPT Interlock Bypass Option	Off On	
BYPASS Interlock Bypass State	Off On	Applies when OROPT = On.

Alarming Display

N/A if PNTFORM = Componnt, or if NODINPTS = 0

ALMOPT Alarming Option	None Cmddis Offnorml	No alarms Alarm if field device did not respond within configured feedback time duration. Alarm if PV and PVNORMAL differs.												
FBTIME Feedback Time in Seconds	_ _ _ _	Applies when ALMOPT = Cmddis. range = 1 to 1000 default = 1000												
CMDFALTM Command Failure Timeout	_ _ _ _	Applies when ALMOPT = Cmddis. range = < FBTIME default = 0												
PVNORMAL PV Value's Normal State Text	Off	Applies when ALMOPT = Offnorml. range = STATETXT(0) – STATETXT(2)												
ALENBST Point Alarm Enable Status	Enable Disable Inhibit	Applies when ALMOT = Offnorml, Cmddis. <table border="0"> <tr> <td><u>Displayed</u></td> <td><u>Logged</u></td> <td><u>Reported to EIP</u></td> </tr> <tr> <td>Yes</td> <td>Yes</td> <td>Yes</td> </tr> <tr> <td>No</td> <td>Yes</td> <td>Yes</td> </tr> <tr> <td>No</td> <td>No</td> <td>No</td> </tr> </table>	<u>Displayed</u>	<u>Logged</u>	<u>Reported to EIP</u>	Yes	Yes	Yes	No	Yes	Yes	No	No	No
<u>Displayed</u>	<u>Logged</u>	<u>Reported to EIP</u>												
Yes	Yes	Yes												
No	Yes	Yes												
No	No	No												

FSC-SM Digital Composite Data Point

Alarming Display (continued)

N/A if NODOPTS = 0

OVRDALOP Override Alarm Option	None Auto_Rtn Cnfm_Rqd	No alarms are generated. Alarms return when override clears. Alarms must be confirmed.
BADPV PR BADCTL PR CMDDIS PR OFFNRM PR	NoAction Journal Low High Emergency Printer Jnprint	Applies when ALMOPT = Offnorml, Cmddis. Alarm is not reported to the system. Logged but not reported to Op Stations. Reported to Unit Alarm Summary display Reported to Area and Unit Alarm Summary Reported to all Alarm Summary displays Reported to US RTJ only Reported to US RTJ and logged
EVTOPT Event Report Option	None Eip	Applies when ALMOPT = None, Offnorml, Cmddis. Neither Eip or Soe is allowed. Process special is triggered in AM/CG.
EIPPCODE Event Init. Proc. Destination 		Applies when EVTOPT = Eip. <i>range</i> = Not applicable <i>default</i> = Null

CCSRC Target Address in FSC for the Contact Cutout Source 	Applies only if ALMOPT = Offnorml or CMDDIS and PNTFORM = Full <i>range</i> = 0 to 65535 <i>default</i> = 0 (Not Configured)
--	---

FSC-SM Digital Input Data Point

FSC-SM DigIn Data Point	Engineer:	Date:
-------------------------	-----------	-------

Point Assignment Display

NAME *range = Not applicable*
 Tag Name |.....| *default = Blank*

NODE TYP *range = Not applicable*
 Node Type PM *default = PM*
 APM
 HPM
 LM
 SM

Applicable if NODE TYP = SM

SMPLTFM Type of Safety Control Platform	FSC TRICON	Safety Manager is using FSC Controller Safety Manager is using TRICON Controller
---	----------------------	---

PNTFORM *Full* Point is fully displayed and alarmed
 Point Form Componnt Point is partially displayed but not alarmed

PTDESC *range = Not applicable*
 Point Descriptor *default = Blank*
 |.....|

EUDESC *range = Not applicable*
 Engineering Units Descriptor |.....| *default = Blank*

KEYWORD *range = Not applicable*
 Keyword Descriptor |.....| *default = Blank*

ASSOCDSP *range = Alphanumeric*
 Associated Display |.....| *default = Blank*

UNIT *range = Alphanumeric*
 Process Unit Point is Assigned to |..| *default = Not applicable*

NTWKNUM *range = 1 to 20*
 NIM's UCN that This Point Is In |..| *default = Not applicable*

NODENUM *range = 1 to 64*
 SMM's Address on the UCN |..| *default = Not applicable*

SLOTNUM *range = 1 to 2000*
 Point Slot Number |.....| *default = Not applicable*

N/A if PNTFORM = Componnt

PRIMMOD Primary Module Point ID 	<i>range = Not applicable</i> <i>default = Null</i>
---	--

FSC-SM Digital Input Data Point

Alarming Display (continued)

N/A if PNTFORM = Componnt

CCSRC Target Address in FSC for the Contact Cutout Source	_._._._._	Applies only if ALMOPT = Offnorml or Chngofst. <i>range = 0 to 65535</i> <i>default = 0 (Not Configured/UCN Access allowed for CONTCUT)</i>
--	-----------	--

FSC-SM Digital Output Data Point

FSC-SM DigOut Data Point	Engineer:	Date:
--------------------------	-----------	-------

Point Assignment Display

NAME *range = Not applicable*
Tag Name |.....| *default = Blank*

NODE TYP *range = Not applicable*
Node Type *default = PM*
PM
APM
HPM
LM
SM

Applicable if NODE TYP = SM

SMPLTFM Type of Safety Control Platform	FSC TRICON	Safety Manager is using FSC Controller Safety Manager is using TRICON Controller
---	----------------------	---

PNTFORM *Full* Point is fully displayed and alarmed
Point Form *Componnt* Point is partially displayed but not alarmed

PTDESC *range = Not applicable*
Point Descriptor *default = Blank*
|.....|

EUDESC *range = Not applicable*
Engineering Units Descriptor |.....| *default = Blank*

KEYWORD *range = Not applicable*
Point Keyword Descriptor |.....| *default = Blank*

ASSOCDSP *range = Alphanumeric*
Associated Display |.....| *default = Blank*

UNIT *range = Alphanumeric*
Process Unit Point is Assigned to |..| *default = Not applicable*

NTWKNUM *range = 1 to 20*
NIM's UCN that Contains This Point |..| *default = Not applicable*

NODENUM *range = 1 to 64*
SMM's Address on the UCN |..| *default = Not applicable*

SLOTNUM *range = 1 to 2000*
Point Slot Number |.....| *default = Not applicable*

N/A if PNTFORM = Componnt

PRIMMOD Primary Module Point ID 	<i>range = Not applicable</i> <i>default = Null</i>
---	--

FSC-SM Logic Data Point

FSC-SM Logic Data Point	Engineer:	Date:
-------------------------	-----------	-------

Point Assignment Display

NAME *range = Not applicable*
 Tag Name *default = Blank*

NODE TYP *range = Not applicable*
 Node Type *default = PM*

PM
 APM
 HPM
 LM
SM

Applicable if NODE TYP = SM

SMPLTFM Type of Safety Control Platform	FSC TRICON	Safety Manager is using FSC Controller Safety Manager is using TRICON Controller
---	----------------------	---

PNTFORM *Full* *Point is fully displayed and alarmed*
 Point Form *Componnt* *Point is partially displayed but not alarmed*

PTDESC *range = Not applicable*
 Point Descriptor *default = Blank*

ASSOCDSP *range = Alphanumeric*
 Associated Display *default = Blank*

UNIT *range = Alphanumeric*
 Process Unit Point is Assigned to *default = Not applicable*

NTWKNUM *range = 1 to 20*
 NIM's UCN that This Point Is In *default = Not applicable*

NODENUM *range = 1 to 64*
 SMM's Address on the UCN *default = Not applicable*

SLOTNUM *range = 1 to 30*
 Point Slot Number *default = Not applicable*

Actual Range check will be calculated on the PU count for each Point type and the mix of configured Points desired.

N/A if PNTFORM = Componnt

PRIMMOD Primary Module Point ID 	<i>range = Not applicable</i> <i>default = Null</i>
--	--

LOGMIX **12_0_12** 12 inputs 0 logic blocks 12 outputs
 Logic Mix

FSC-SM Logic Data Point

NIM Input Connections Display

LISRC

Source Addresses in FSC for the Logic Input

<u>Input</u>	<u>Source Point.Parameter</u>
LISRC (1)
LISRC (2)
LISRC (3)
LISRC (4)
LISRC (5)
LISRC (6)
LISRC (7)
LISRC (8)
LISRC (8)
LISRC (10)
LISRC (11)
LISRC (12)

LIBADOPT

Logic Input Failure Handling Option

Off

On

Hold

"Off" state is substituted for bad input.

"On" state is substituted for bad input.

Last good value is substituted for bad input.

LODSTN

Destination Addresses in FSC for the Logic output

<u>Output</u>	<u>Destination Point.Parameter</u>
LODSTN (1)
LODSTN (2)
LODSTN (3)
LODSTN (4)
LODSTN (5)
LODSTN (6)
LODSTN (7)
LODSTN (8)
LODSTN (9)
LODSTN (10)
LODSTN (11)
LODSTN (12)

FSC-SM Logic Data Point

NIM Input Connections Display (continued)

LOENBL

Source Address in FSC for enable

Enable	PLC Address	
LOENBL (1)	_._._._._	<i>range = 0 to 65535 default = 0</i>
LOENBL (2)	_._._._._	<i>range = 0 to 65535 default = 0</i>
LOENBL (3)	_._._._._	<i>range = 0 to 65535 default = 0</i>
LOENBL (4)	_._._._._	<i>range = 0 to 65535 default = 0</i>
LOENBL (5)	_._._._._	<i>range = 0 to 65535 default = 0</i>
LOENBL (6)	_._._._._	<i>range = 0 to 65535 default = 0</i>
LOENBL (7)	_._._._._	<i>range = 0 to 65535 default = 0</i>
LOENBL (8)	_._._._._	<i>range = 0 to 65535 default = 0</i>
LOENBL (9)	_._._._._	<i>range = 0 to 65535 default = 0</i>
LOENBL (10)	_._._._._	<i>range = 0 to 65535 default = 0</i>
LOENBL (11)	_._._._._	<i>range = 0 to 65535 default = 0</i>
LOENBL (12)	_._._._._	<i>range = 0 to 65535 default = 0</i>

FSC-SM Logic Data Point

NIM Logic Descriptors Display

N/A if PNTFORM = Componnt

NODESC		
Number of Generic Descriptors	_._._	<i>range = 0 to 12</i> <i>default = 0</i>
GENDESC		
Generic Descriptors (defaults = blanks)		
GENDESC(1)	_._._._._._._._._._	
GENDESC(2)	_._._._._._._._._._	
GENDESC(3)	_._._._._._._._._._	
GENDESC(4)	_._._._._._._._._._	
GENDESC(5)	_._._._._._._._._._	
GENDESC(6)	_._._._._._._._._._	
GENDESC(7)	_._._._._._._._._._	
GENDESC(8)	_._._._._._._._._._	
GENDESC(9)	_._._._._._._._._._	
GENDESC(10)	_._._._._._._._._._	
GENDESC(11)	_._._._._._._._._._	
GENDESC(12)	_._._._._._._._._._	

FSC-SM Flag Point

FSC-SM Flag Data Point	Engineer:	Date:
------------------------	-----------	-------

Point Assignment Display

NAME *range = Not applicable*
Tag Name |.....| *default = Blank*

NODE TYP *range = Not applicable*
Node Type PM *default = PM*
APM
HPM
LM
SM

Applicable if NODETYP = SM

SMPLTFM Type of Safety Control Platform	FSC TRICON	Safety Manager is using FSC Controller Safety Manager is using TRICON Controller
---	----------------------	---

PNTFORM *Full* *Point is fully displayed and alarmed*
Point Form Componnt *Point is partially displayed but not alarmed*

PTDESC *range = Not applicable*
Point Descriptor *default = Blank*
|.....|

EUDESC *range = Not applicable*
Engineering Units Descriptor |.....| *default = Blank*

KEYWORD *range = Not applicable*
Point Keyword |.....| *default = Blank*

ASSOCDSP *range = Alphanumeric*
Associated Display |.....| *default = Blank*

UNIT *range = Alphanumeric*
Process Unit Point is Assigned to |..| *default = Not applicable*

NTWKNUM *range = 1 to 20*
NIM's UCN that This Point Is In |..| *default = Not applicable*

NODENUM *range = 1 to 64*
SMM's Address on the UCN |..| *default = Not applicable*

SLOTNUM *range = 1 to 2000*
Point Slot Number |.....| *default = Not applicable*

The actual Range check will be calculated on the mix of configured Points desired.

N/A if PNTFORM = Componnt

PRIMMOD Primary Module Point ID 	<i>range = Not applicable</i> <i>default = Null</i>
---	--

FSC-SM Flag Point

Operating Configuration Display

N/A if PNTFORM = Componnt

STATETXT (1) State 1 Descriptor	<i>range =</i> Not applicable <i>default =</i> ON		
STATETXT (0) State 0 Descriptor	<i>range =</i> Not applicable <i>default =</i> OFF		
BOXCLR (1) State 1 Box Color	Red Cyan	Green Yellow	White Blue	Black Magenta
BOXCLR (0) State 0 Box Color	Red Cyan	Green Yellow	White Blue	Black Magenta

Alarming Display

N/A if PNTFORM = Componnt or SLOTNUM > 512

OFFNRMPR Off Normal Alarm Priority	NoAction Journal Low High Emergency Printer Jnlprint	Alarm is not reported to the system. Logged but not reported to Operator Stations. Reported to Unit Alarm Summary display. Reported to Area and Unit Alarm Summary. Reported to all Alarm Summary displays. Reported to US RTJ only. Reported to US RTJ and logged.
ALENBST Alarm Enable State	Enable Disable Inhibit	<i>default =</i> Enable
EIPPCODE EIP Point ID	<i>range =</i> Not applicable <i>default =</i> Blank
CCSRC Target Address in FSC for the Contact Cutout Source	<i>range =</i> 0 to 65535 <i>default =</i> 0

FSC-SM Timer Point

FSC-SM Timer Data Point	Engineer:	Date:
-------------------------	-----------	-------

Point Assignment Display

NAME *range = Not applicable*
 Tag Name |.....| *default = Blank*

NODE Typ *range = Not applicable*
 Node Type APM *default = PM*
HPM
LM
SM

Applicable if NODE Typ = SM

SMPLTFM Type of Safety Control Platform	FSC TRICON	Safety Manager is using FSC Controller Safety Manager is using TRICON Controller
---	----------------------	---

PNTFORM **Full** Point is fully displayed and alarmed
 Point Form Componnt Point is partially displayed but not alarmed

PTDESC *range = Not applicable*
 Point Descriptor *default = Blank*
 |.....|

EUDESC |.....| *range = Not applicable*
 Engineering Units Descriptor *default = Blank*

KEYWORD |.....| *range = Not applicable*
 Keyword Descriptor *default = Blank*

ASSOCDSP |.....| *range = Alphanumeric*
 Associated Display *default = Blank*

UNIT |..| *range = Alphanumeric*
 Process Unit Point is Assigned to *default = Not applicable*

NTWKNUM |..| *range = 1 to 20*
 NIM's UCN that Contains This Point *default = Not applicable*

NODENUM |..| *range = 1 to 64*
 SMM's Address on the UCN *default = Not applicable*

SLOTNUM |.....| *range = 1 to 1500*
 Point Slot Number *default = Not applicable*

The actual Range check will be calculated on the PU count for each Point type and the mix of configured Points desired.

N/A if PNTFORM = Componnt

PRIMMOD Primary Module Point ID 	<i>range = Not applicable</i> <i>default = Null</i>
---	--

FSC-SM Numeric Point

FSC-SM Numeric Data Point	Engineer:	Date:
---------------------------	-----------	-------

Point Assignment Display

NAME *range = Not applicable*
Tag Name |.....| *default = Blank*

NODE TYP *range = Not applicable*
Node Type APM *default = PM*
 HPM
 LM
 SM

Applicable if NODE TYP = SM

SMPLTFM	FSC	Safety Manager is using FSC Controller
Type of Safety Control Platform	TRICON	Safety Manager is using TRICON Controller

PNTFORM *Full* *Point is fully displayed and alarmed*
Point Form Componnt *Point is partially displayed but not alarmed*

PTDESC *range = Not applicable*
Point Descriptor *default = Blank*

|.....|

EUDESC *range = Not applicable*
Engineering Units Descriptor |.....| *default = Blank*

KEYWORD *range = Not applicable*
Keyword Descriptor |.....| *default = Blank*

ASSOCDSP *range = Alphanumeric*
Associated Display |.....| *default = Blank*

UNIT *range = Alphanumeric*
Process Unit Point is Assigned to |..| *default = Not applicable*

NTWKNUM *range = 1 to 20*
NIM's UCN that Contains This Point |..| *default = Not applicable*

NODENUM *range = 1 to 64*
SMM's Address on the UCN |..| *default = Not applicable*

SLOTNUM *range = 1 to 1000*
Point Slot Number |.....| *default = Not applicable*

The actual Range check will be calculated on the mix of configured Points desired.

FSC-SM Numeric Point

Point Assignment Display (Continued)

N/A if PNTFORM = Compoint

PRIMMOD

Primary Module Point ID

|.....|

range = Not applicable

default = Null

PVFORMAT

|_.__|

range: D0 (XXXX.)

D1 (XXX.X)

D2 (XX.XX)

D3 (X.XXX)

default: D1

READER COMMENTS

Honeywell IAC's Automation College welcomes your comments and suggestions to improve future editions of this and other documents.

You can communicate your thoughts to us by fax or mail using this form, or by placing a toll-free telephone call. We would like to acknowledge your comments—please include your complete name, address, and telephone number.

BY FAX: Use this form and fax to us at 1-602-313-4108.

BY TELEPHONE: In the USA, use our toll-free number 1-800-822-7673 (available in the 48 contiguous states except Arizona; in Arizona dial 1-602-313-5558).

BY MAIL: Use this form and mail to us at:

Honeywell Inc.
Industrial Automation and Control
Automation College
2820 West Kelton Lane
Phoenix, AZ 85023-3028

Title of Document: **FSC Safety Manager
Configuration Forms**

Issue Date: **09/96**

Document Number: **FS88-500**

Writer: **HSMS Product Marketing**

COMMENTS: _____

RECOMMENDATIONS: _____

Name: _____ **Date:** _____

Title: _____

Company: _____

Address: _____

City: _____ **State:** _____ **ZIP:** _____

Telephone: _____ **FAX:** _____

Honeywell

Helping You Control Your World

Industrial Automation and Control

Honeywell Inc.

16404 North Black Canyon Highway

Phoenix, Arizona 85023-3033